

BIOARK

NUNAVIK, QC.

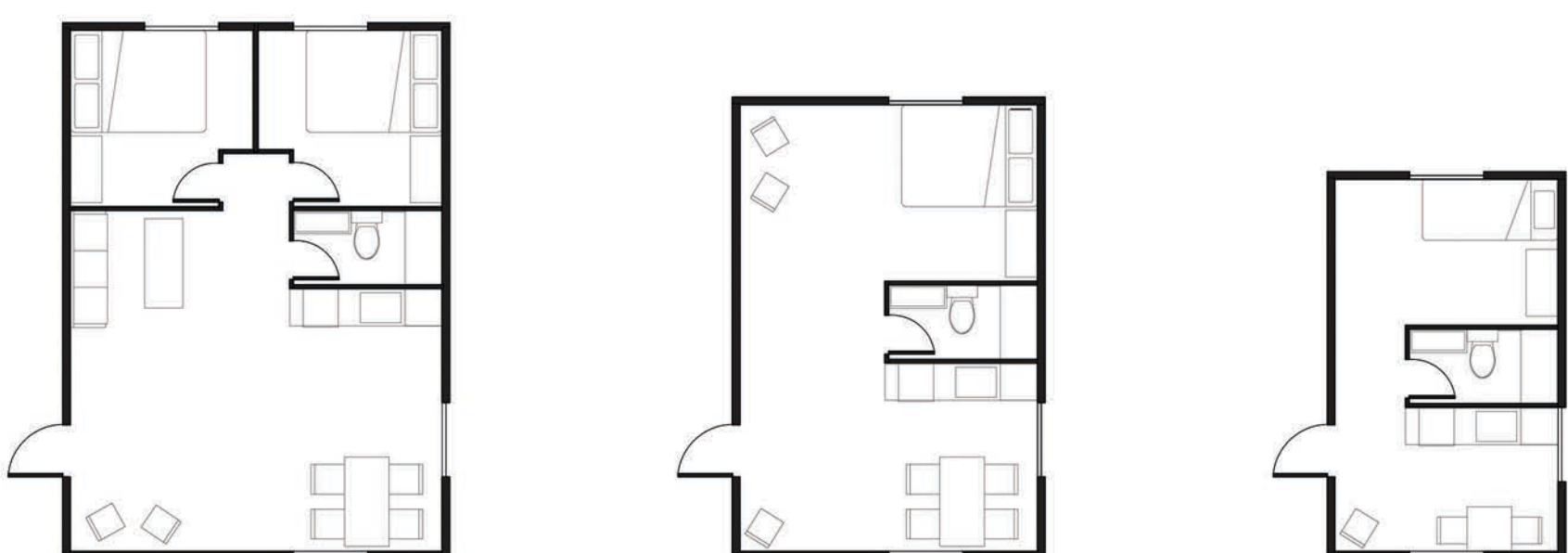
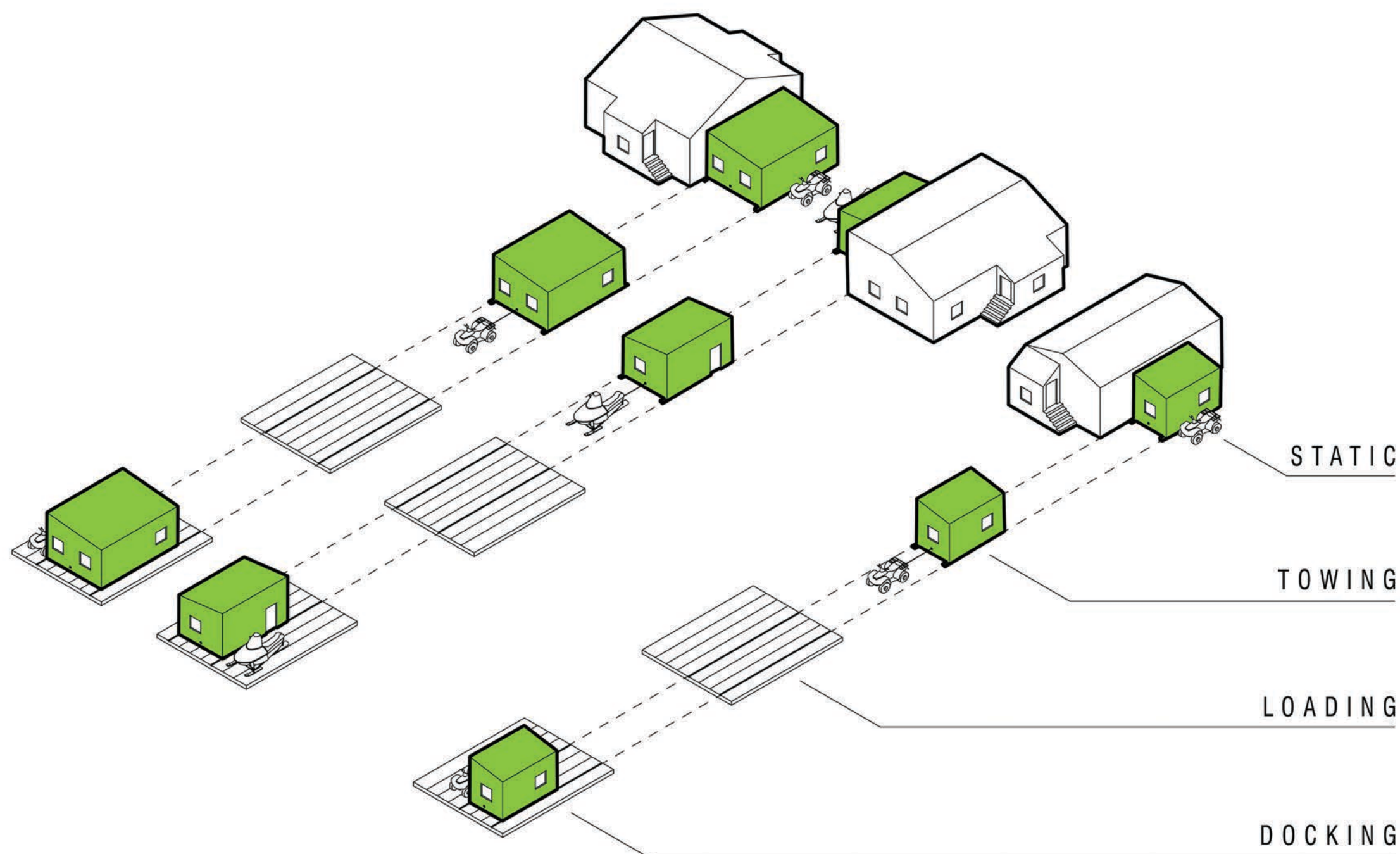


ᐆᐆᐆᐆ



The Bio Ark provides inhabitants of rural northern Quebec an alternative to braving the particularly harsh Nunavik winters. Addressing issues such as 18 hour darkness, extreme cold, violent blizzards and almost 6 months of inaccessibility. Each amphibious biome measures 2 square km, and provides enough area for a thriving and self-sustaining ecological community. Following a south-oriented direction of travel towards the southernmost tip of Hudson's Bay, the residents of Nunavik are able to transport their seasonal, self-assembled modules to the ark, after having detached them from their primary residence on mainland where the modules lie rest during the warmer months. Embracing the traditional nomadic lifestyle of the Nunavummiut, the Bio Ark offers seasonal refuge to the occupants of all 14 of the region's villages, without compromising their desired way of life, while simultaneously providing easier access to much needed resources.

SEASONAL MODULES

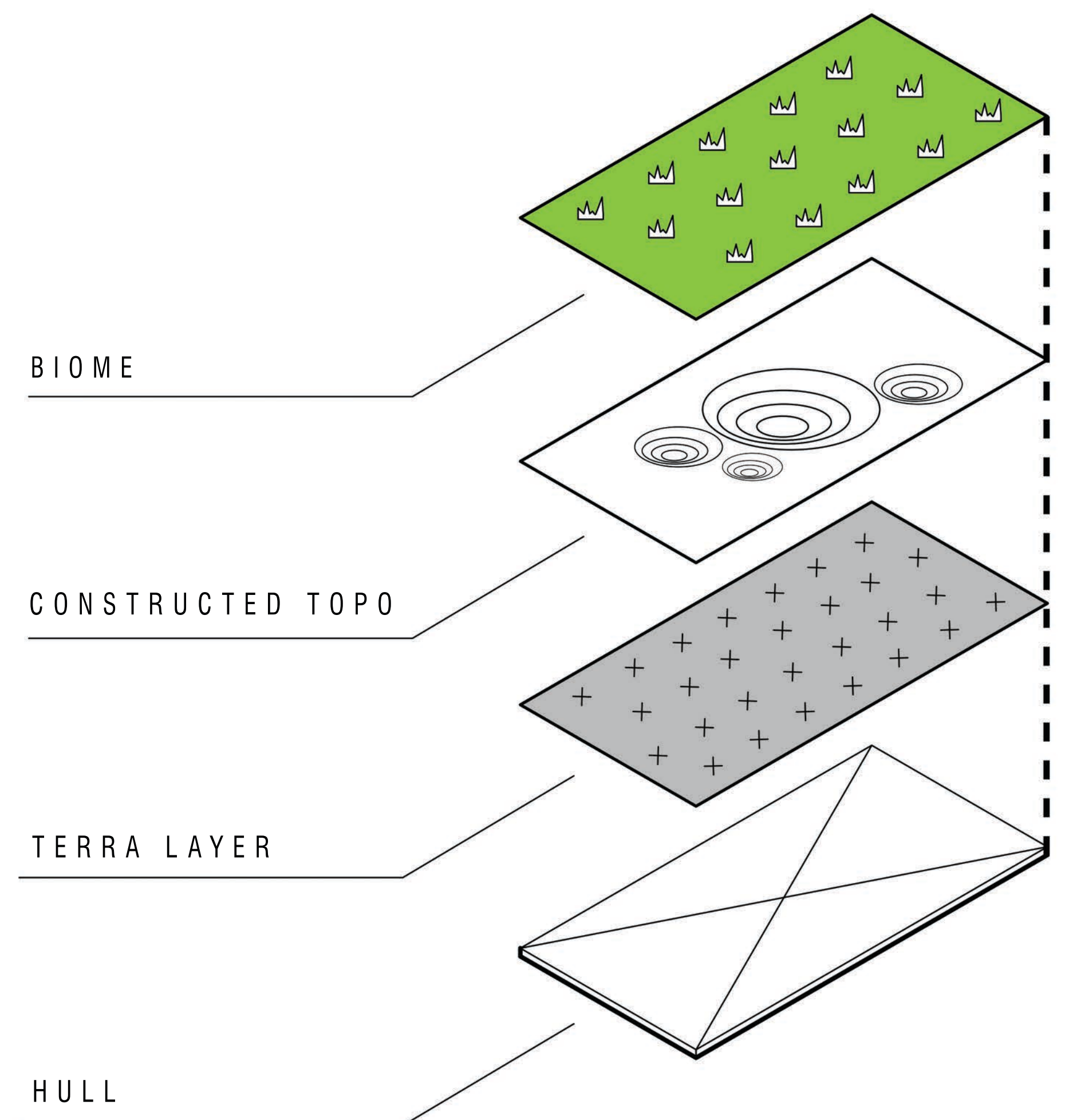


4

2

1

ARK COMPOSITION

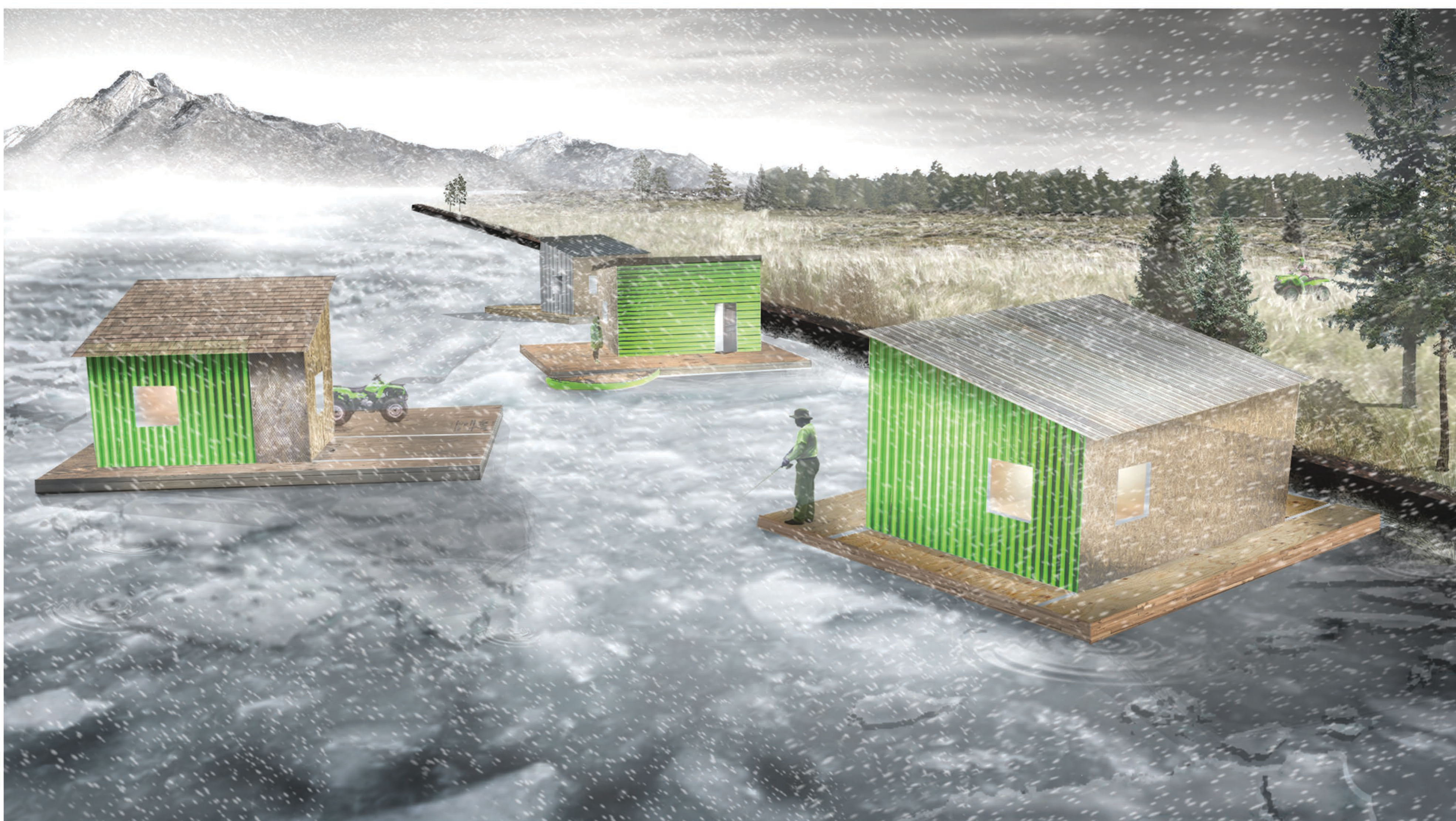




ENDURE



SURVIVE



MIGRATE