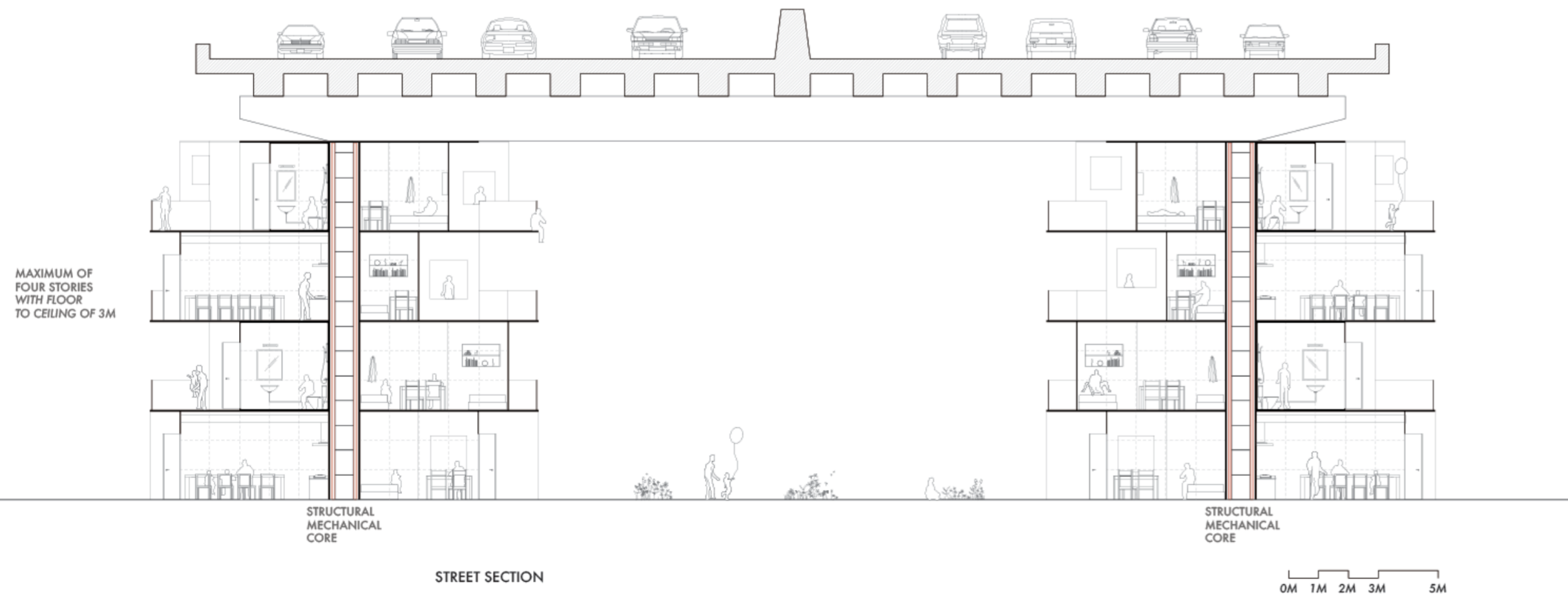
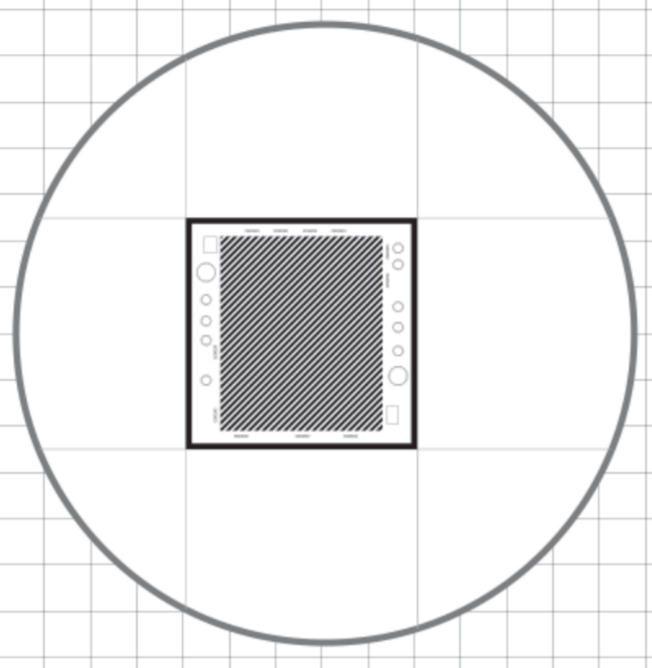
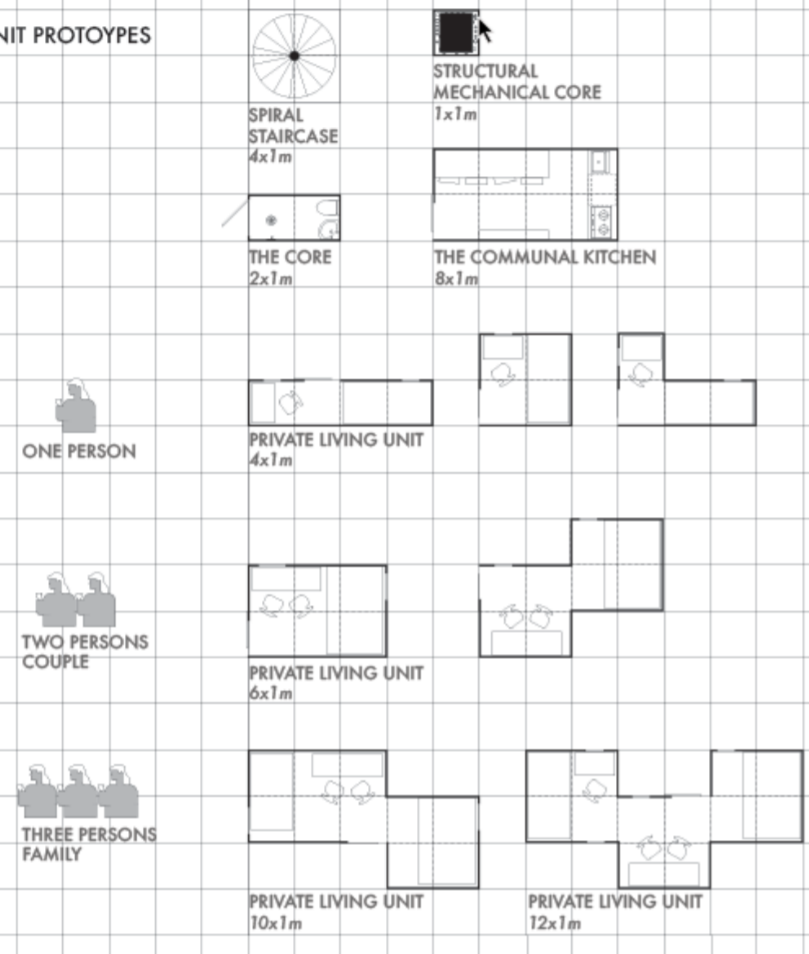


TEAM NUMBER: 2018-26



What is a 1x1 DIY under the Gardiner Expressway?  
1 times 1 times Do-it-Yourself  
Whether you are a single bachelor or a couple wanting to change neighbourhood from time to time or even a young family excited about living under the Gardiner Expressway, the 1 times 1 times unit system allows one to be flexible while sharing a central core with all mechanical systems including electrical, water, sewage, and water supply through the Gardiner's many columns. Communal spaces such as public staircases, shared kitchen as well as bathroom can also be formatted according to diagrams below. So, come do-it-yourself! We offer you walls, but what does your unit look like?

UNIT PROTOTYPES



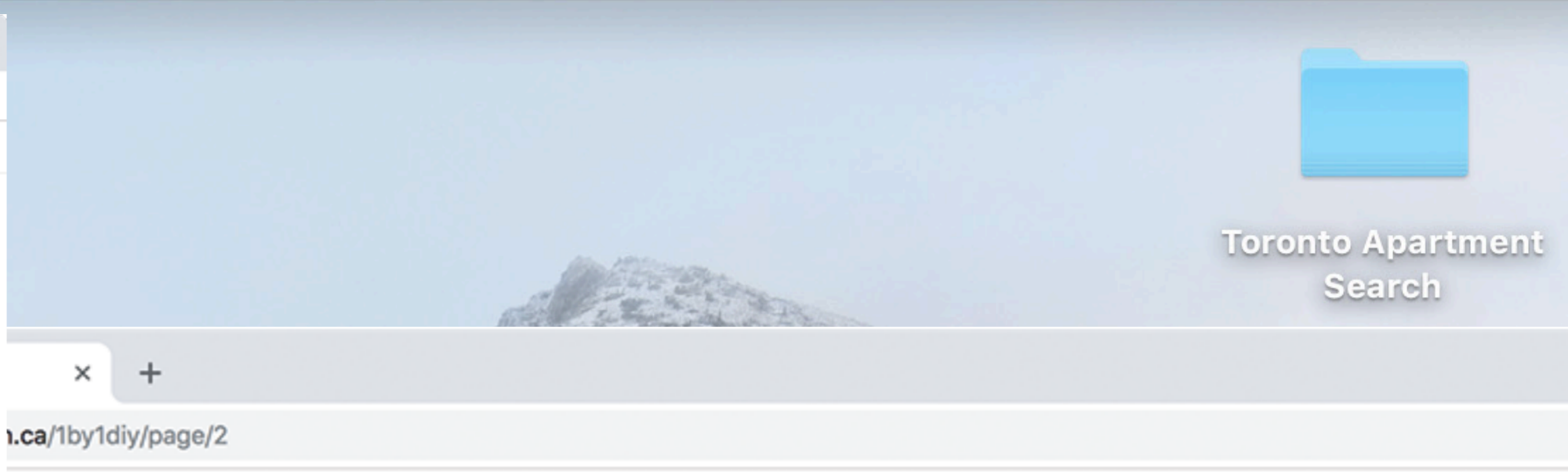
MAXIMUM OF FOUR STORIES WITH FLOOR TO CEILING OF 3M

STRUCTURAL MECHANICAL CORE

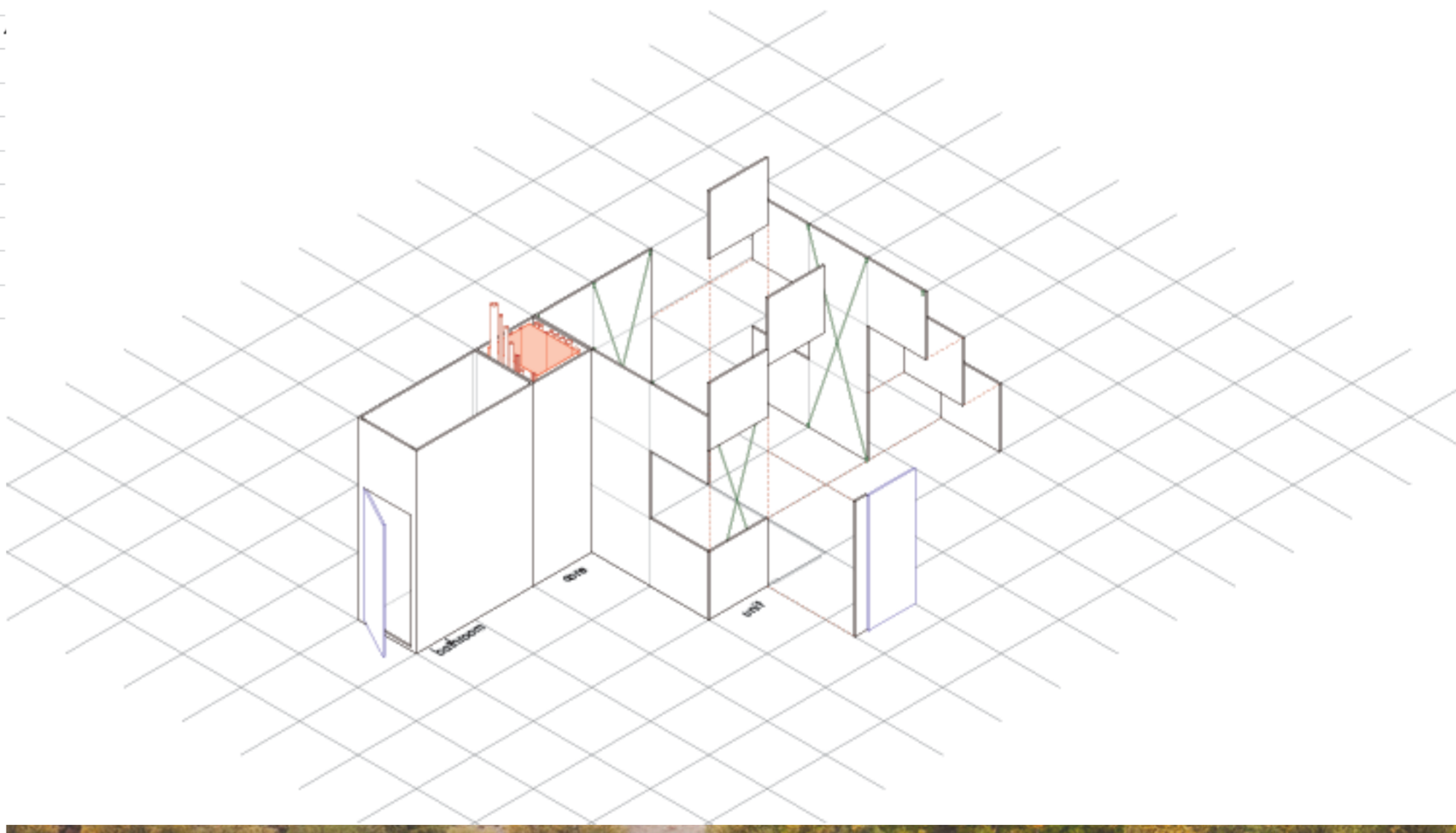
STRUCTURAL MECHANICAL CORE

STREET SECTION

0M 1M 2M 3M 5M



What is a 1x1 DIY under the Gardiner Expressway?  
1 times 1 times Do-it-Yourself  
Each panel is customizable in terms of material, but it consistently follows the 1 by 1 grid unit, making it an easy process for any dwellers to creatively tackle their own space making configuration under the Gardiner Express. Nevertheless, there will always be a public bathroom or a kitchen attached to the structural and mechanical core.



TEAM NUMBER: 2018-26