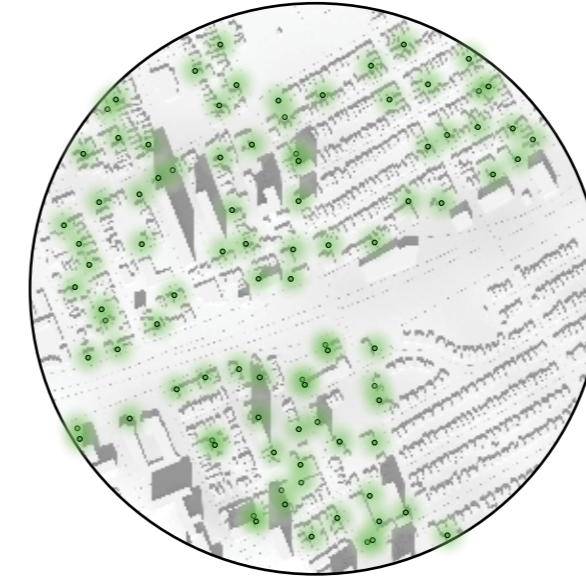


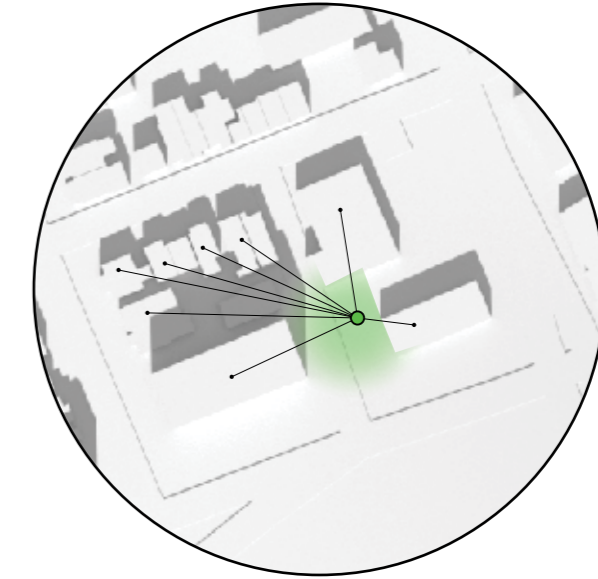
DUMP GENERATION

The newest on-trend market agitator, Dumpster Generation is an innovative movement of young, independent builders. Taking advantage of locally sourced, cost-efficient materials, the system utilized existing Nodal Distribution Centres within the urban fabric. Aspiring homeowners are able to create packages of prefabricated elements, providing a starter kit of components necessary to begin a new dwelling.

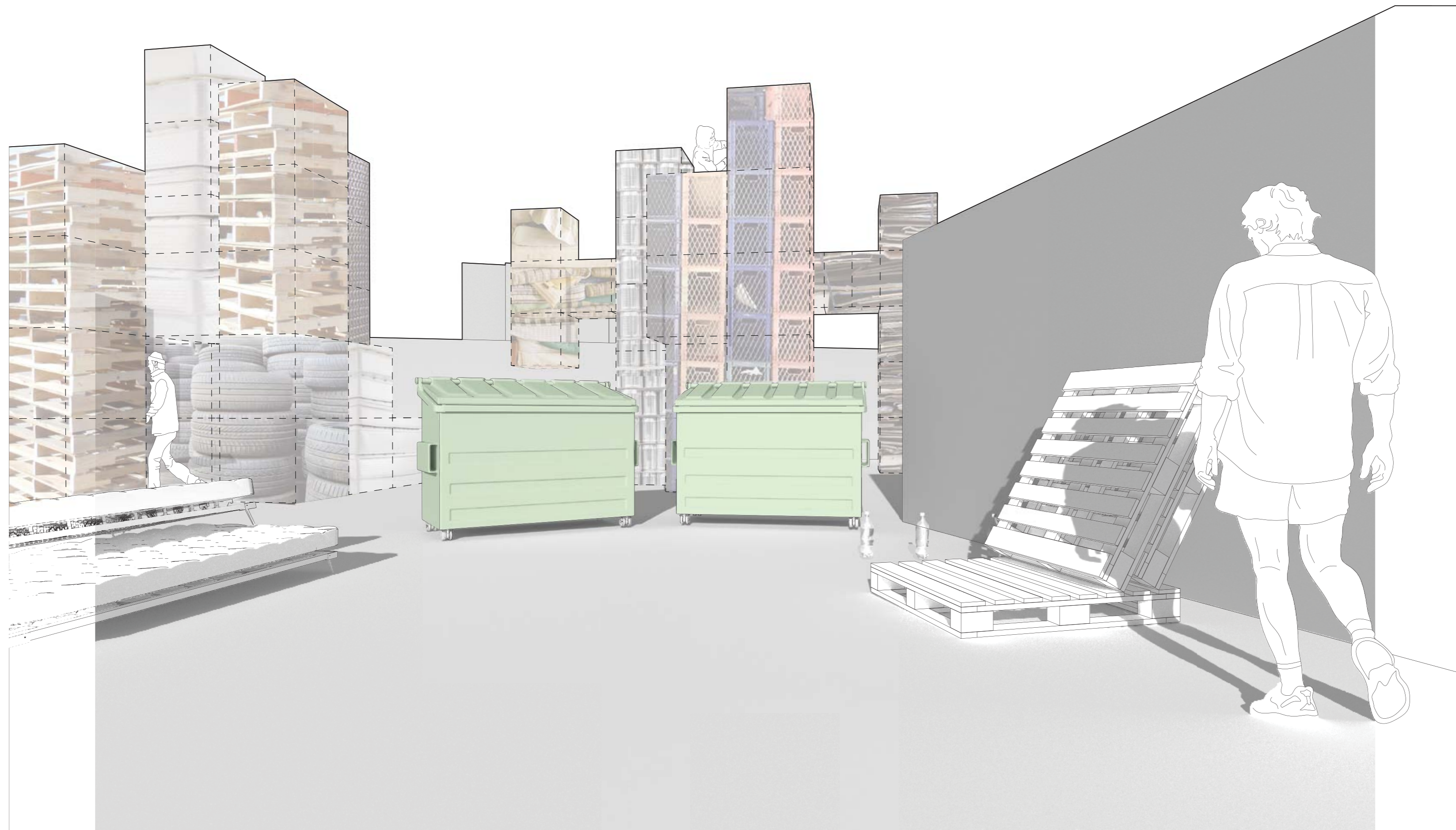
Ecologically minded, this revolutionary movement diverts material from landfills, reusing them in modular dwellings. Centering new built communities around these Nodes creates increased neighborhood density, utilizing existing infrastructure to build new communities. Close proximity to Distribution Centres allows for easy customization and high flexibility.



Existing Distribution Centres



Model Aggregate Location





COLLECTION

Building materials are collected in existing standardized nodes within the urban context.



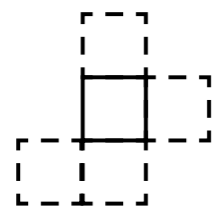
SORTING

Items of standardized unit size are bundled into Pre-Fab Modular Packages.



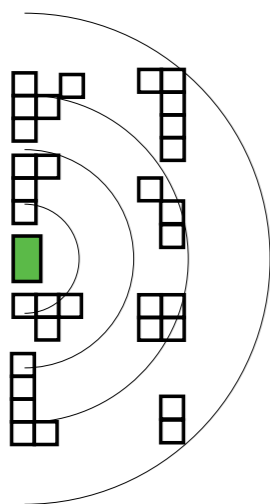
DISTRIBUTION

D-I-Y Builders pick up Modular Packages, designed for easy and accessible transport.



1m² MODULES

Each Module provides components for structure, environmental barriers, and light sources. Dwellings can be aggregated in units of 1m².



MODULAR COMMUNITY

Individual dwellings can grow and shrink as needed, alongside their neighbors. With close proximity to the Distribution Centre, communities are easily flexible and dynamic.

