

HORIZONS ÉLEVÉS - *ELEVATED HORIZONS*

L'émergence des ruelles verts à Montréal est un testament à les innovations récentes de la ville. C'est estimée que a la fin de 2019, il devrait y avoir plus de 440 interventions. L'Horizons Élevés a le but d'augmenter l'expérience des ruelles à travers l'utilisation d'espaces verts and les ruelles élevés. Dan ce projet, le rôle social est mis en action grâce à les tâches qui améliorent la responsabilité, le travail en équipe et potentiellement stimulent les pratiques durables pour les générations du futur. La ruelle fournit d'espace pour les réunions en communauté, des ateliers, nuit des films etc. A travers la mise en oeuvre de la nature dans le projet la communauté commence à contribuer positivement a les phénomènes urbains. Dans les ruelles élevés les membre de la communauté ont la flexibilité de cultiver leur propre nourriture dans des lits de jardin, de vendre, et de réinvestir dans la communauté. Cette élévation fournis de lumière naturelle qui n'est pas interrompue, qui est essentiel à la cultivation. Échasses réglables fournissent l'instalation facile, car il n'y a pas des dimensions spécifiques de la site, les parties peuvent être préfabriqués. De plus, la ruelle élevée fournit nouvelle infrastructure pour la communauté, assurant la sécurité de la communauté en éliminant les variables non sûres de l'équation. Relier les communautés par des sentiers permet aux résidents de parcourir plusieurs pâtés de maisons sans avoir à traverser des routes.

The emergence of Ruelles Vertes in Montreal is a testament to the city's recent innovations. It is estimated that by the end of 2019, there will be more than 440 interventions. The Elevated Horizons project aims to enhance the laneway experience through the use of green spaces and elevated laneways. In this project, a social role is played as it encourages the community to get involved. The community is provided with tasks that enhance responsibility, working in a team, and teaches kids how they are currently helping the environment and to potentially continue sustainable practices for future generations. The laneway provides space for community gatherings, workshops, movie nights, etc. By implementing nature in the design, the community is positively contributing to the current urban phenomena. On the elevated laneways community members have the flexibility to grow their own food on garden beds, sell, and reinvest within the community. This new elevation provides unshielded natural light which can increase plant growth. Adjustable stilts allow for easy installation, as there are no site-specific measurements required, and all parts can be prefabricated. This new elevation provides new infrastructure for the community, providing safety for the community by taking unsafe variables out of the equation. Connecting the communities through pathways allows residents to travel multiple blocks without having to cross roads.

Glass Handrail

Wood Decking

Concrete Base

Steel Structure

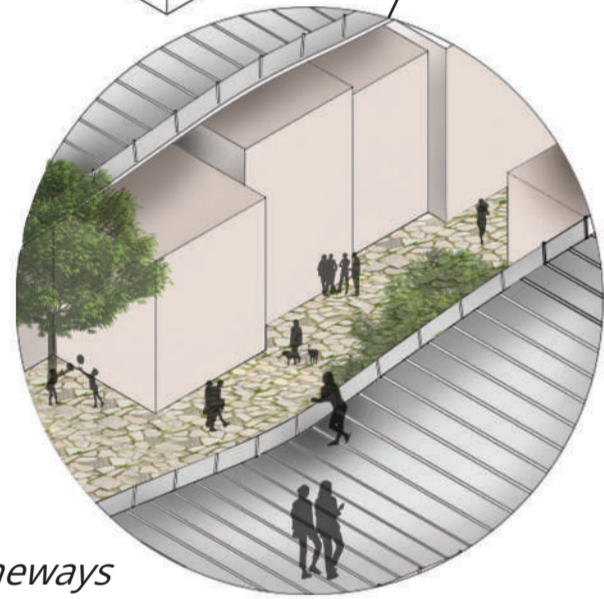
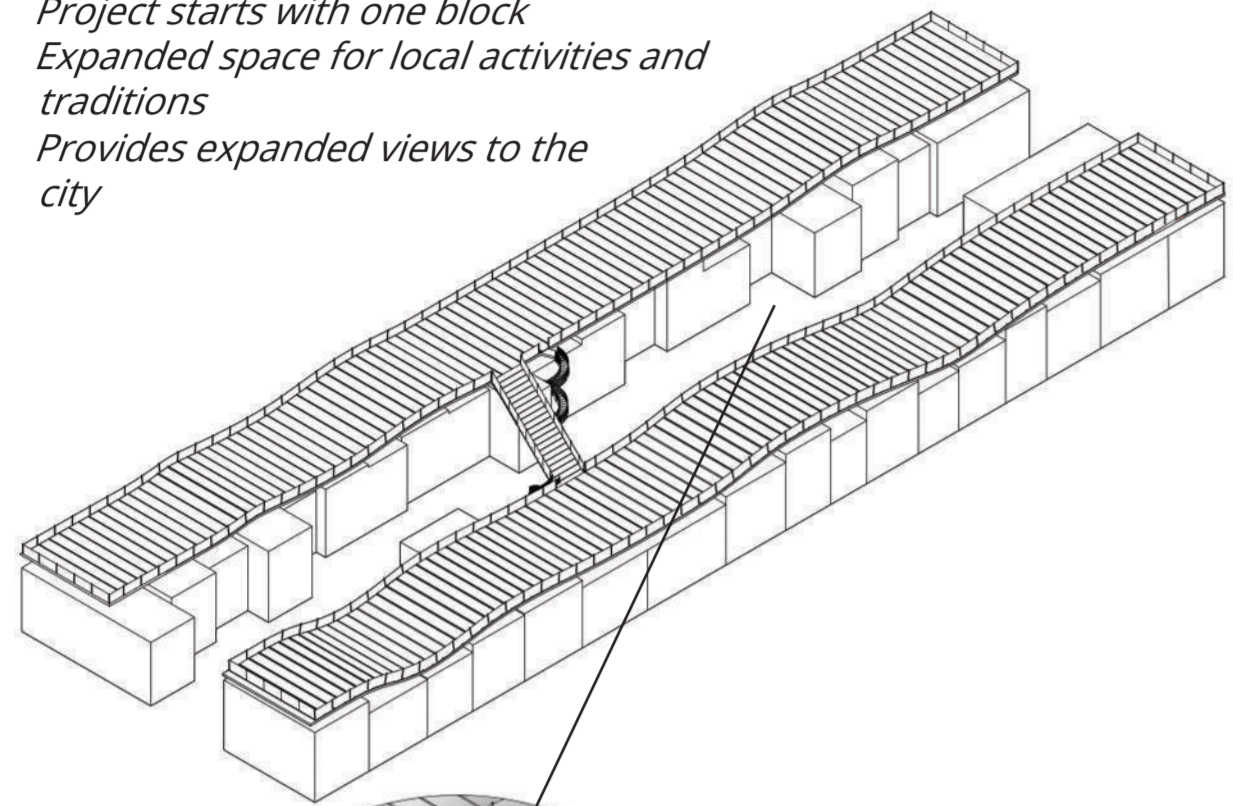
Adjustable Supports



PHASE ONE: 1-5 YEARS

Pilot

- Project starts with one block
- Expanded space for local activities and traditions
- Provides expanded views to the city

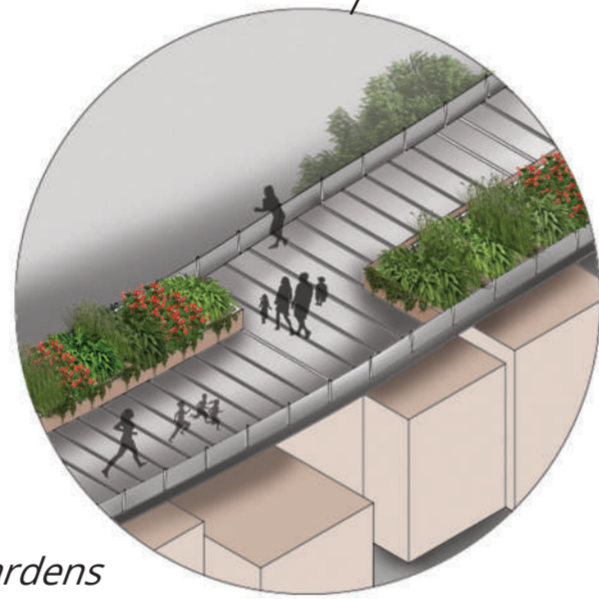
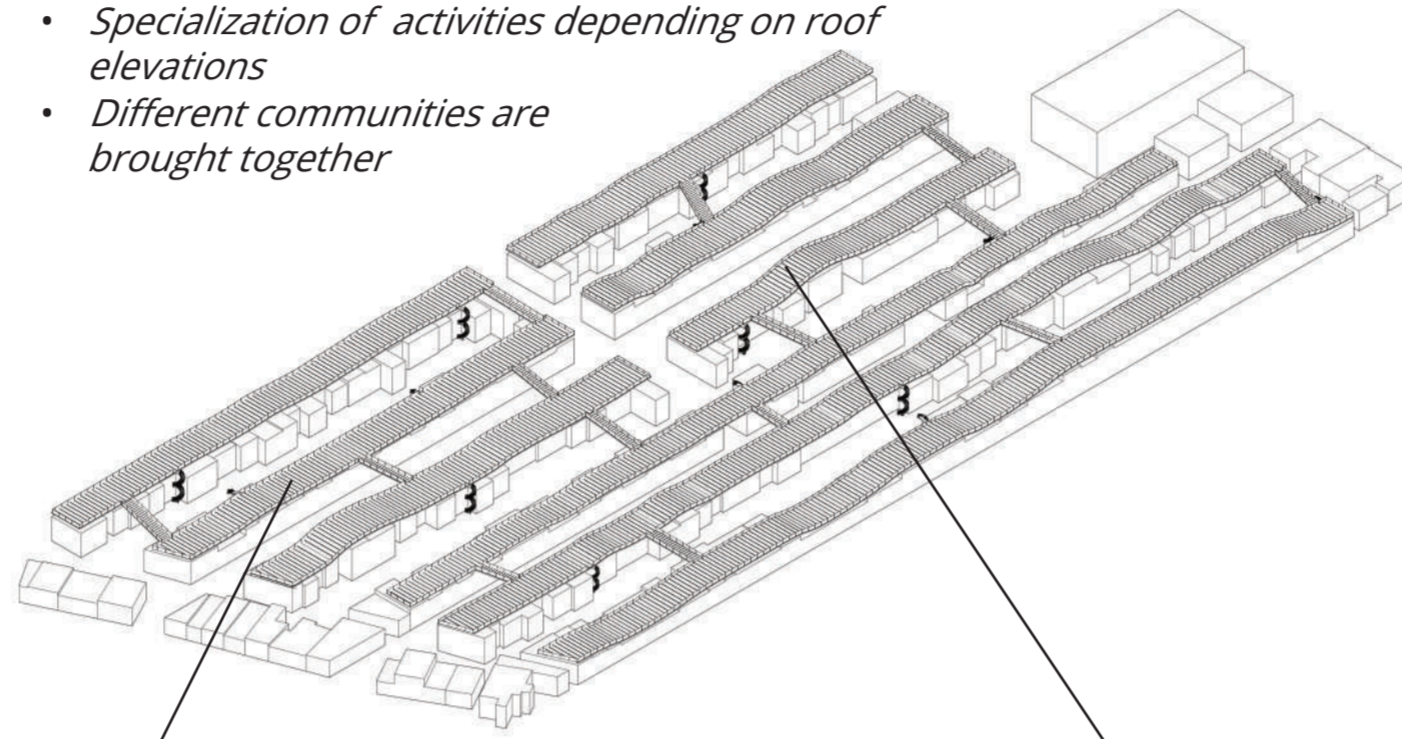


Preserved Laneways

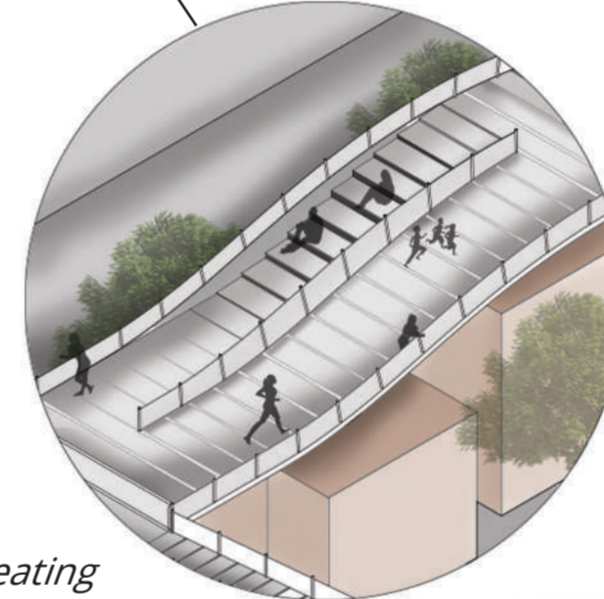
PHASE TWO: 5-20 YEARS

Connected Communities

- Additional blocks are added to network
- Specialization of activities depending on roof elevations
- Different communities are brought together



Community Gardens

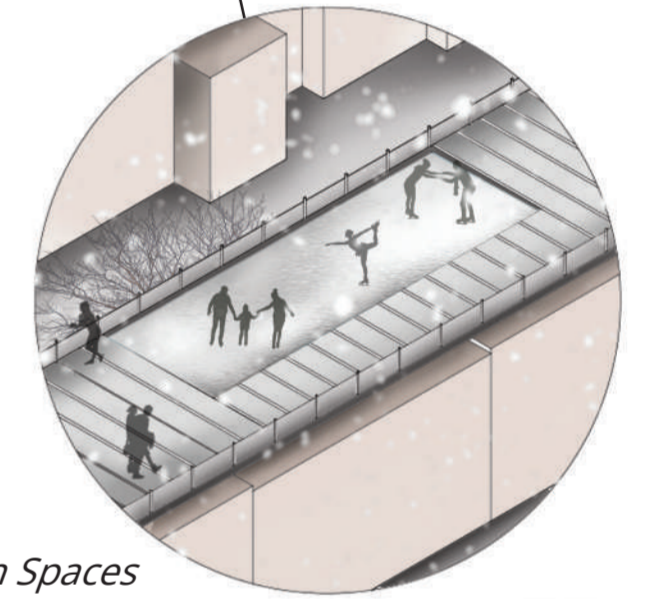
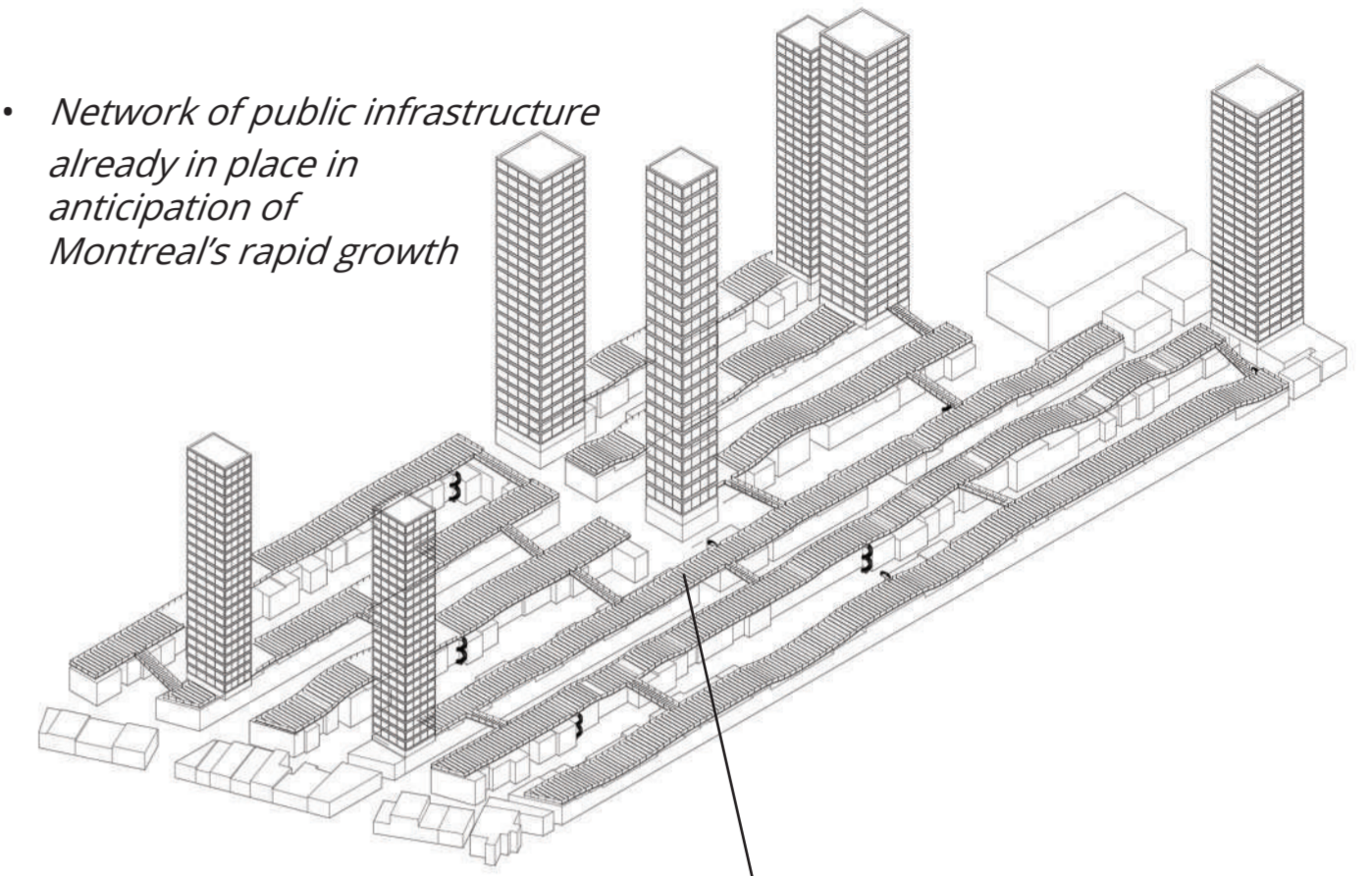


Stepped Seating

PHASE THREE: 20-30 YEARS

Intensification - Building For the Future

- Network of public infrastructure already in place in anticipation of Montreal's rapid growth



Recreation Spaces

