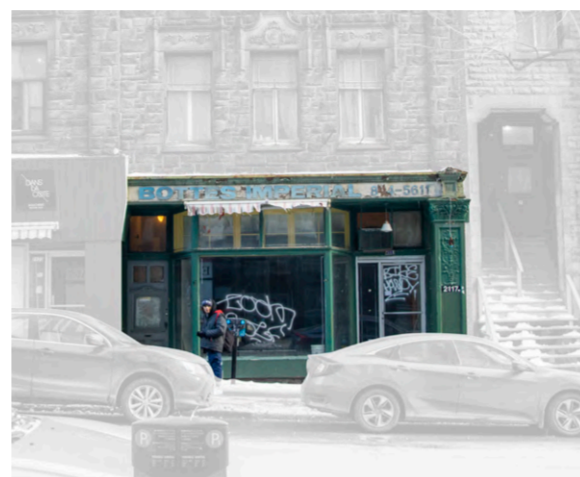
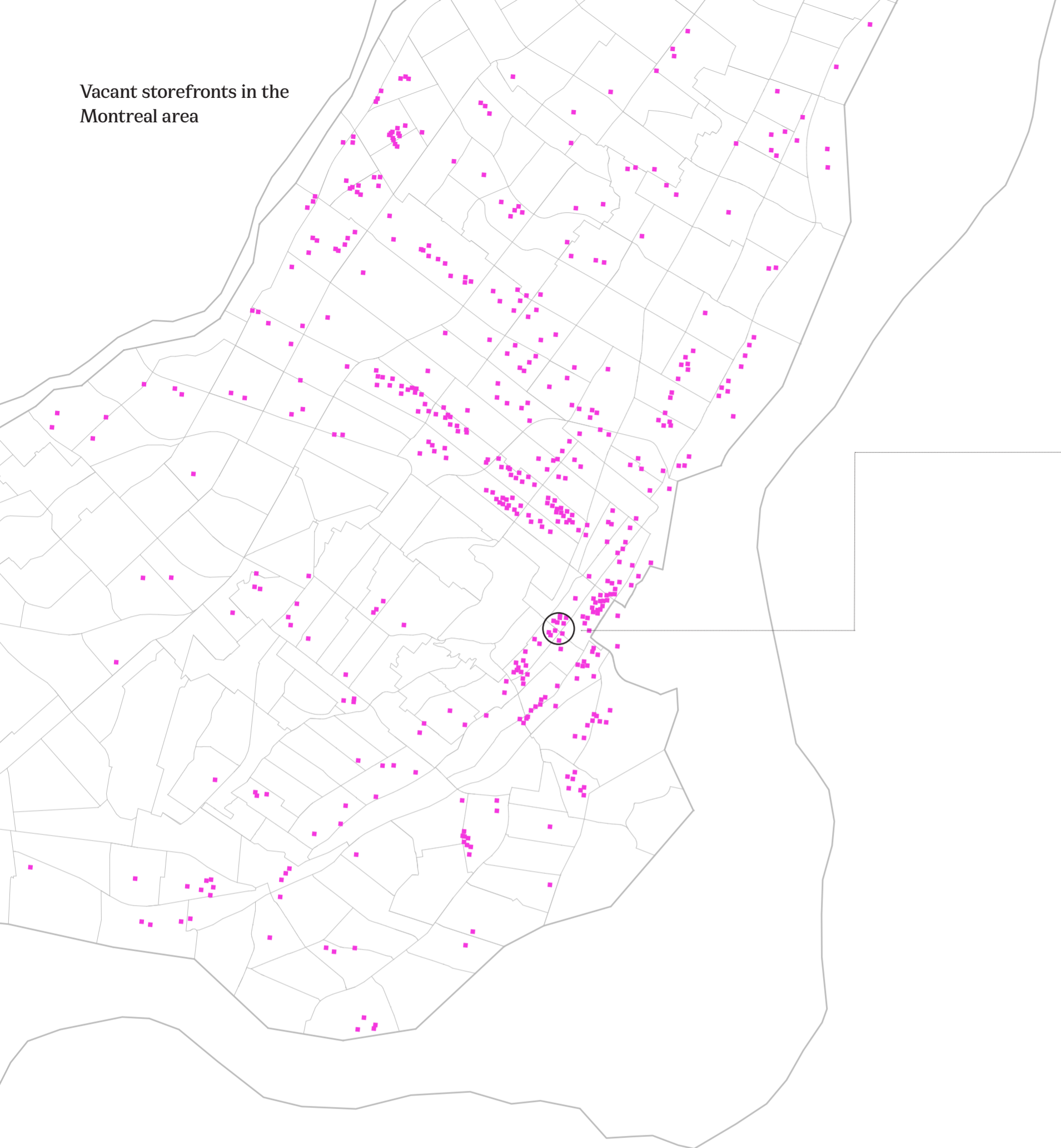


Vacant storefronts in the Montreal area



Documentation of vacant storefronts, Downtown Montreal

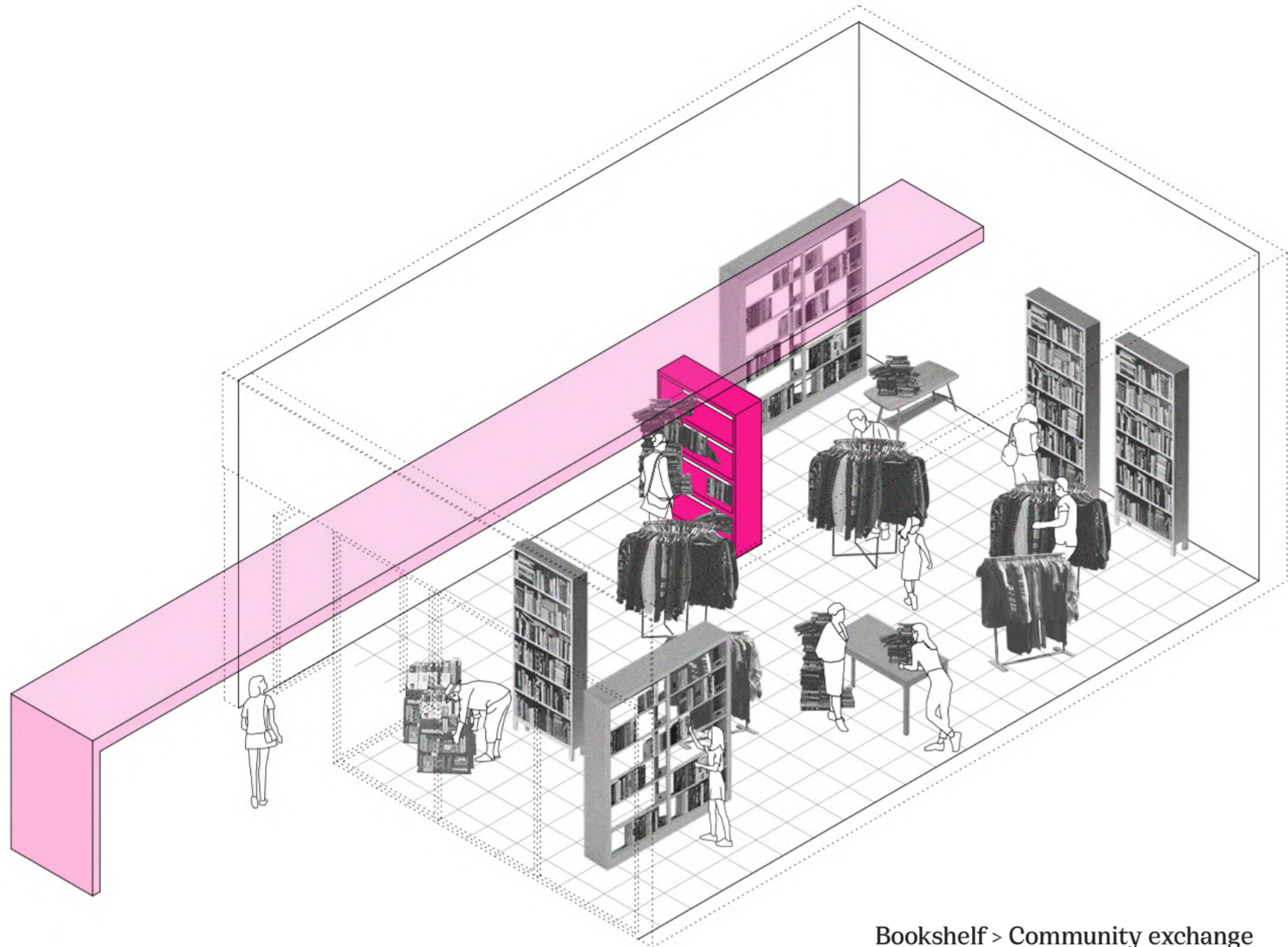
Community Pop-ups

Storefront is the crucial interface where urban dwellers connect to their broader social fabric. The diversity and activeness of the storefronts is, therefore, a clear indicator of whether an urban environment is livable and enjoyable. Urban storefronts in Montreal are, unfortunately, in declining use, as we found an astonishing amount of commercial spaces located in the city's most popular areas left vacant for an extended period of time.

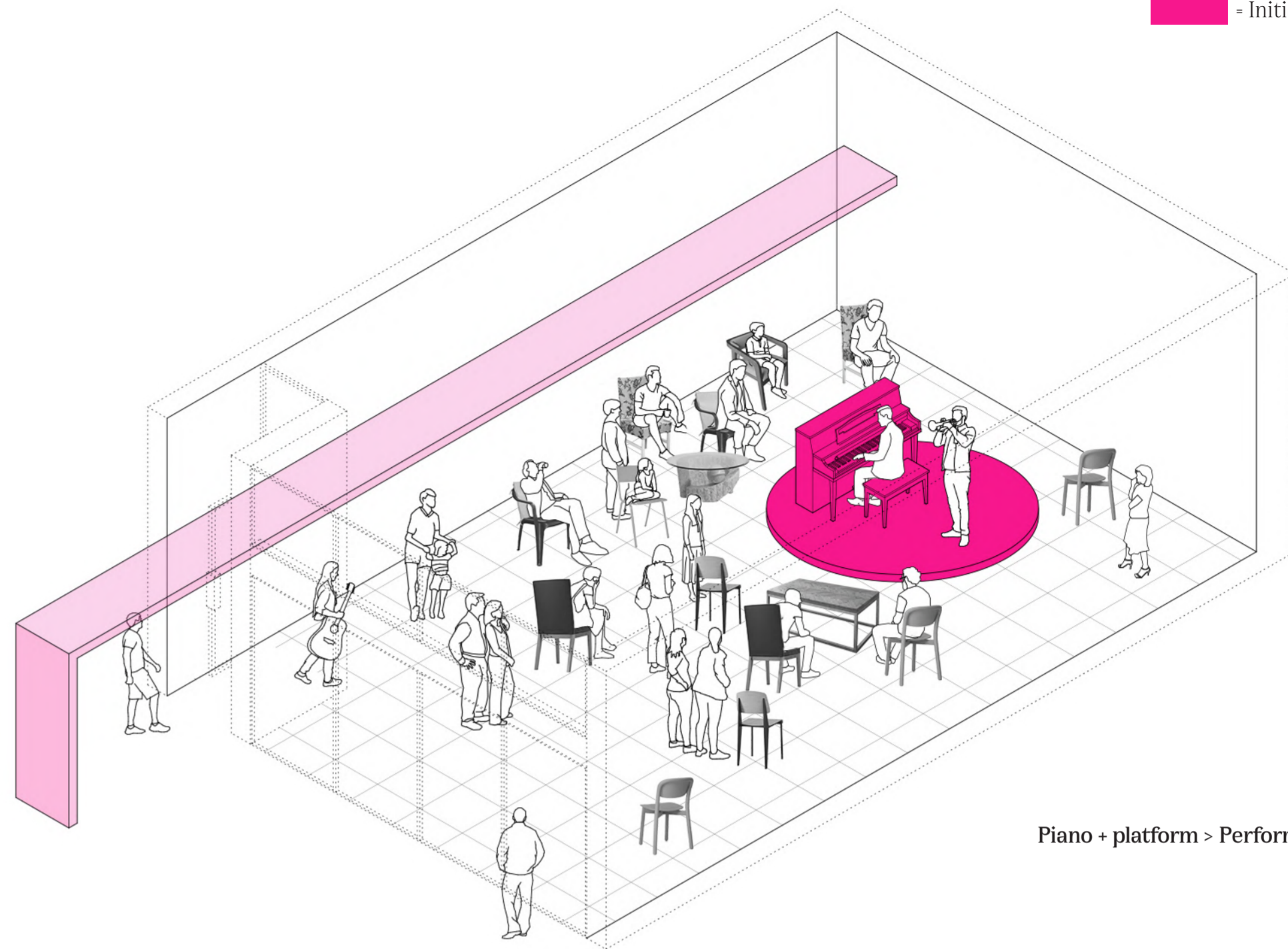
Our research was local, yet the phenomenon is global. The increasing rent and the fast development of online shopping make it impossible for small business owners to maintain their business in a profitable way. The danger of such an issue is rather apparent; there becomes a disconnect between individuals and their community, without common spaces for chance interaction and meeting.

As a response, our intervention postulates a set of devices aiming to temporarily convert unused commercial storefronts into public space for the neighbourhood. The interventions provide a foundation for self-generated possibilities by the community in the future.

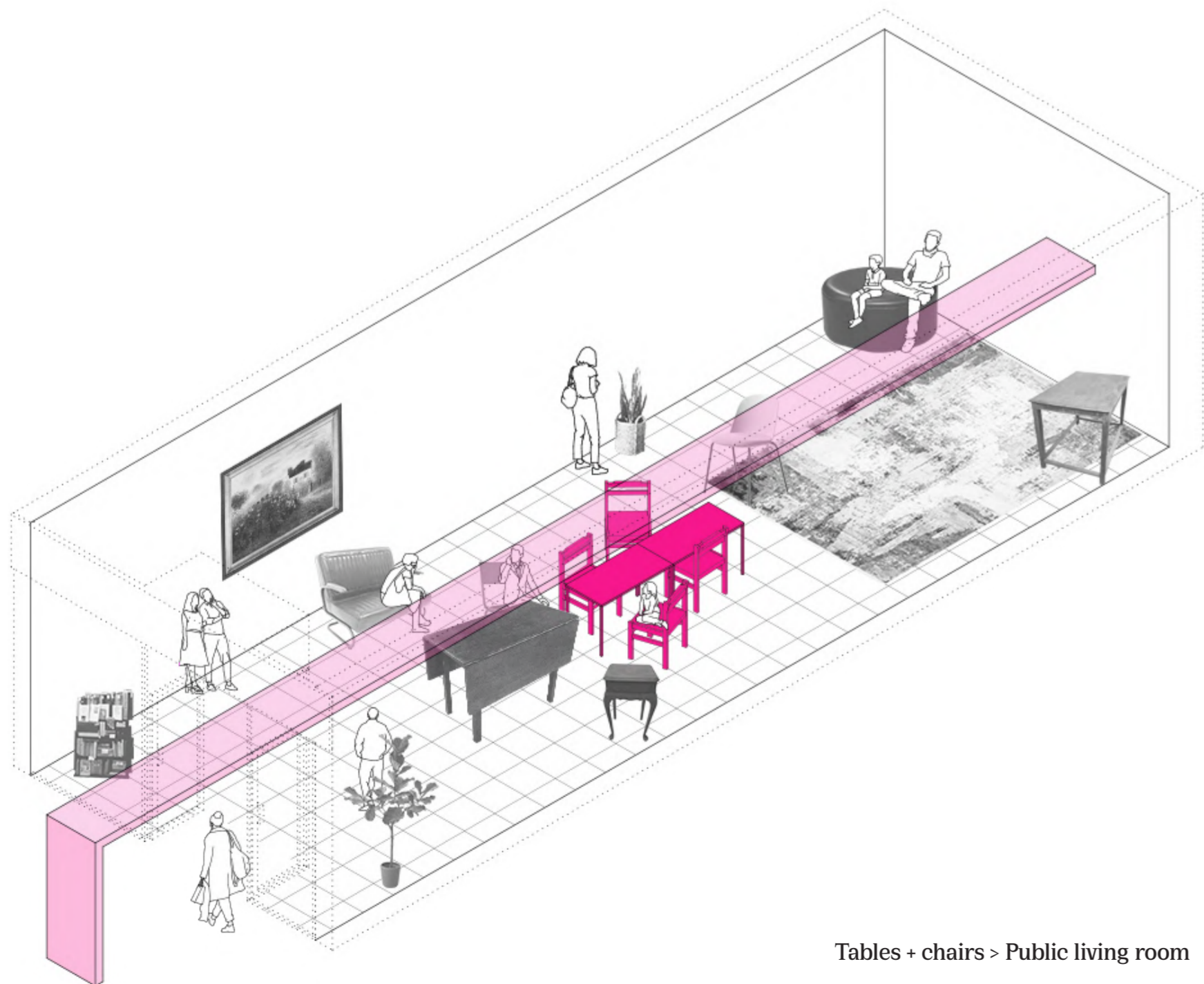




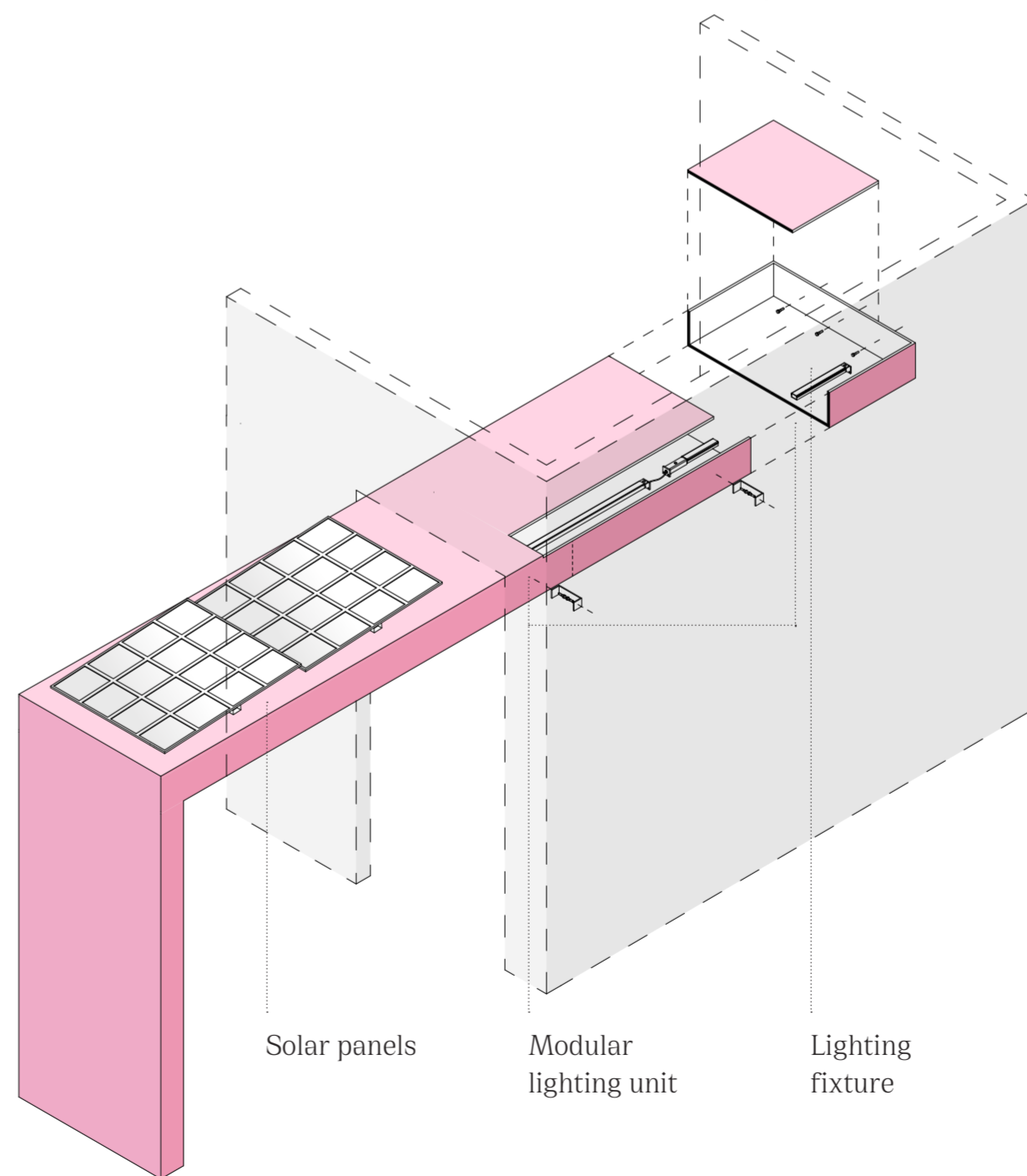
Bookshelf > Community exchange



Piano + platform > Performance space



Tables + chairs > Public living room



Solar panels
Modular lighting unit
Lighting fixture

Lighting/power module detail

Each empty storefront would be intervened with an L-shaped box (lighting and power module) and "initiating objects" (a piece of furniture that hints the possible uses for this new public space). The L-shaped box extends to the edge of the sidewalk, breaking the threshold of the exterior urban space and interior of the storefront. On top of the box, solar panels will be installed to provide power for the lighting fixtures inside the box, considering the power supply will be cut off as the shop is vacant.

The "initiating objects" only acts as a starter, leaving the interpretation and full completion of the space to the communities themselves. Some shelving units can lead to future possibilities of adopting the storefront as the exchange space by the community, a piece of musical instrument and an elevated platform can lead to a local performance venue, et cetera.