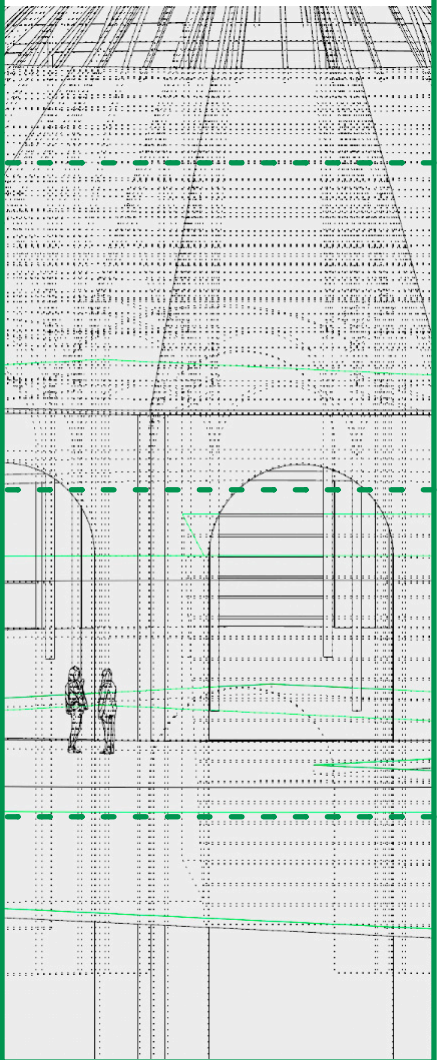
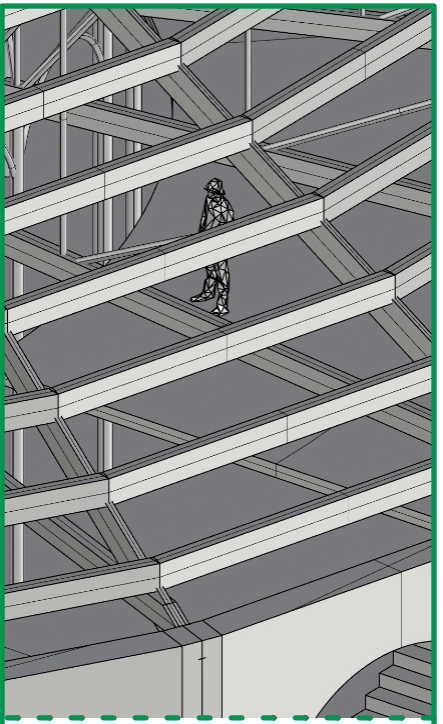
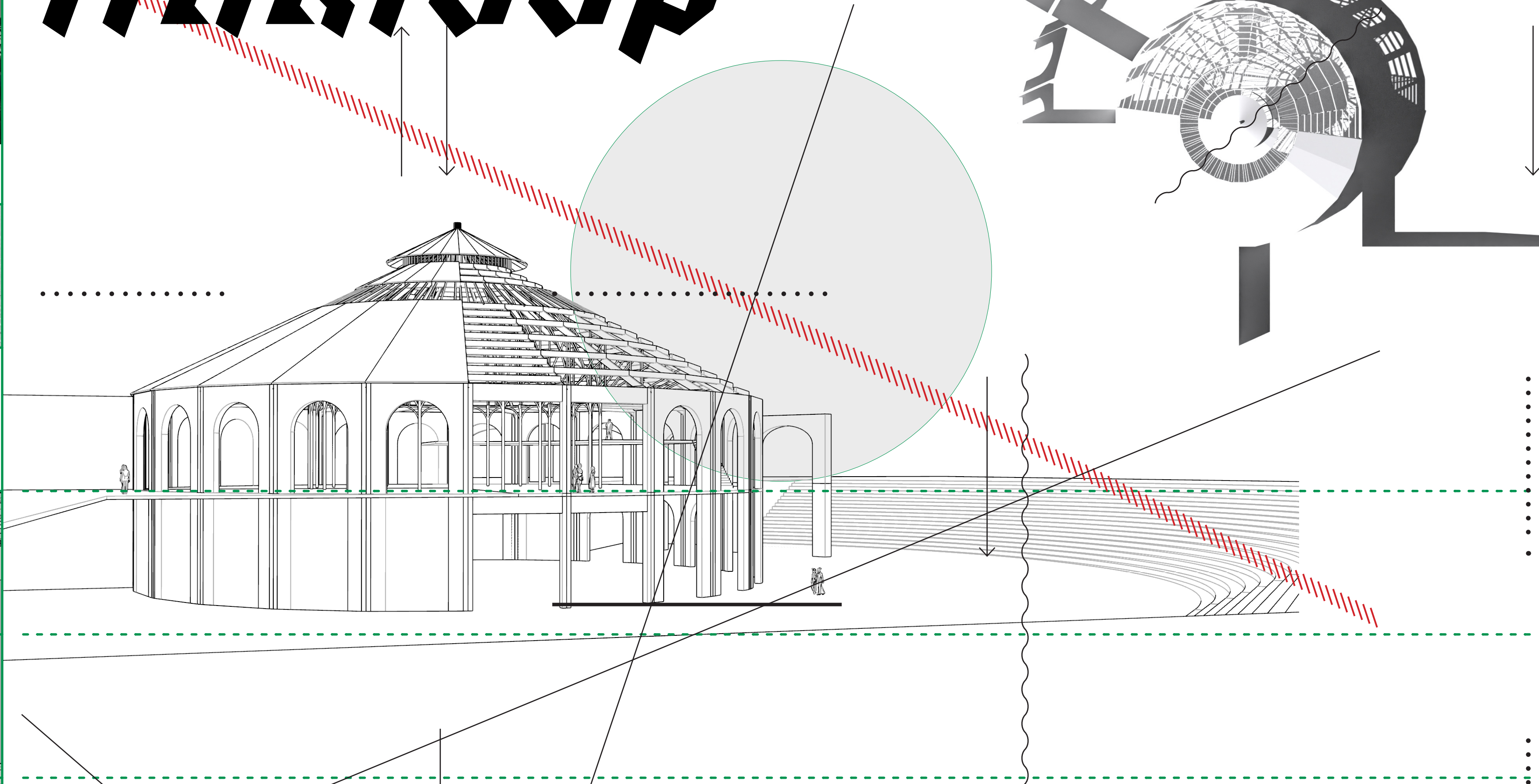
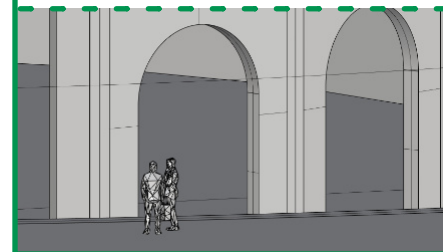
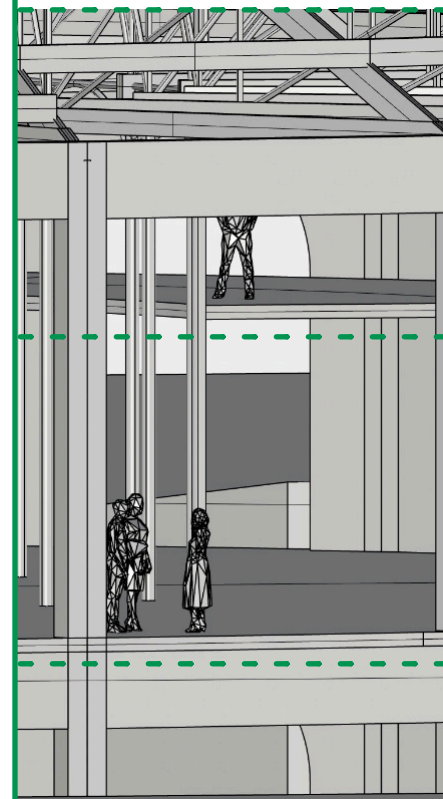
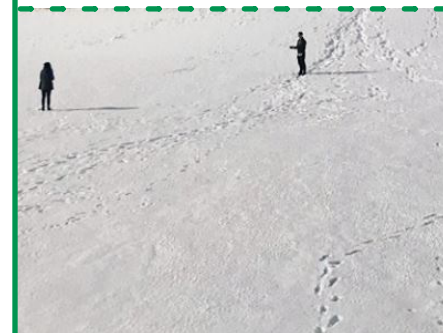


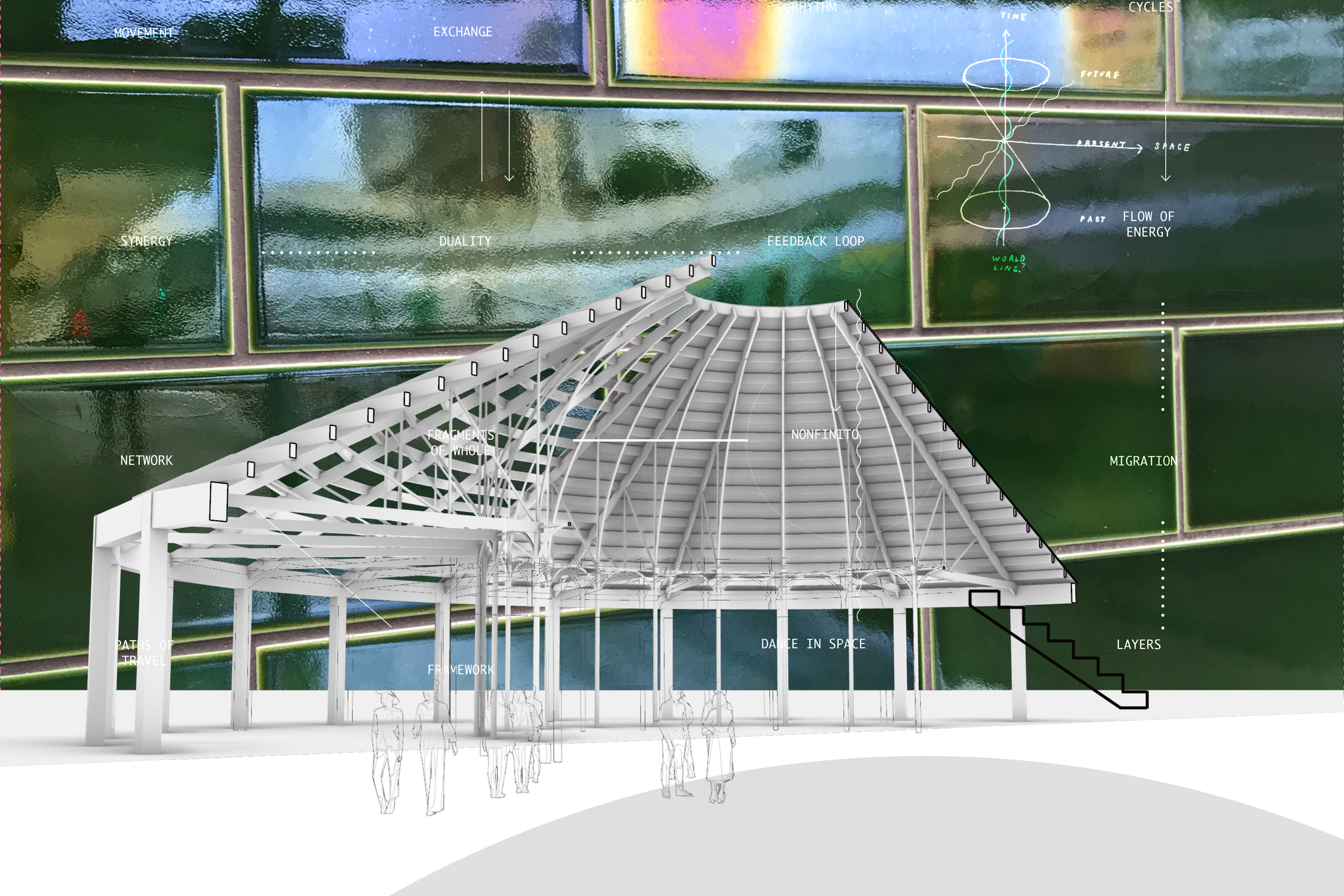
Linkloop



the station is a meeting point, drawing in people to its centre and urging connection.

As social isolation is exacerbated by our deep dives into the world of simulacrum and screens, it is most necessary to engage with each other and in turn the land. our sensitivity and gratitude can begin with the bus drivers who operate our transit lines, and eventually grow to feed the lines of care that will heal us. extending compassion to the strangers who share this slice of time is simple - we listen in an effort to understand.

what is the story of the elders? how about the teenager with a backpack full of books? who around us is looking for solitude and who needs connection? within the optimistic future of transit as social infrastructure, we are encouraged to pause, draw in close and say hello.



MOVEMENT

EXCHANGE

RHYTHM

CYCLES

TIME

FUTURE

PRESENT

SPACE

PAST

FLOW OF ENERGY

WORLD LINE

SYNERGY

DUALITY

FEEDBACK LOOP

NETWORK

FRAGMENTS OF WHOLE

NONFINITO

MIGRATION

PATHS OF TRAVEL

FRAMEWORK

DANCE IN SPACE

LAYERS