

RIBBON

PUBLIC TRANSPORT CCA PROJECT

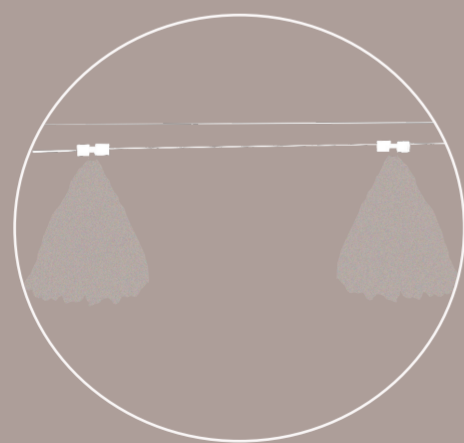
How can transit be reimagined to help the healing of our sociability? Public squares. Spaces for gathering have always been a key element of societies that have shaped individual's journeys as part of the collective.

Over the past few years, we have seen a cultural reset in the way we think about human interactions, socialization and public transport. RIBBON is a project which proposes a bus stop as a moment in which citizens take a pause from the fast pace of urban life and cross paths with one another. It rethinks the traditional city's public squares and street corners in a modern context heavily dominated by technology and transport. As both a bus shelter and a social space, RIBBON allows us to reestablish the social links that have been lost following the pandemic. Rethinking public transportation waiting spaces would be one of the strategies to highlight social interaction and attract users.

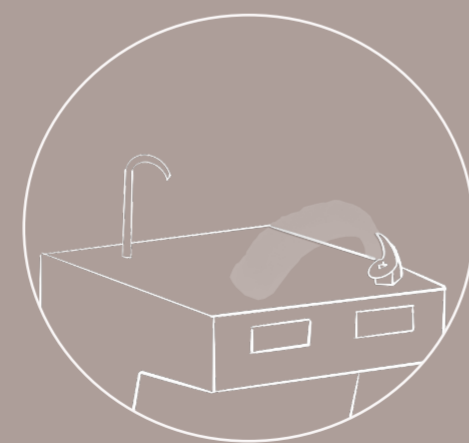
RIBBON rethinks the traditional city's public squares and street corners in a modern context heavily dominated by technology and transport. The public square acts as a continuation of the bus shelter. The roof is transformed into furniture, then into benches and into appropriable tables.



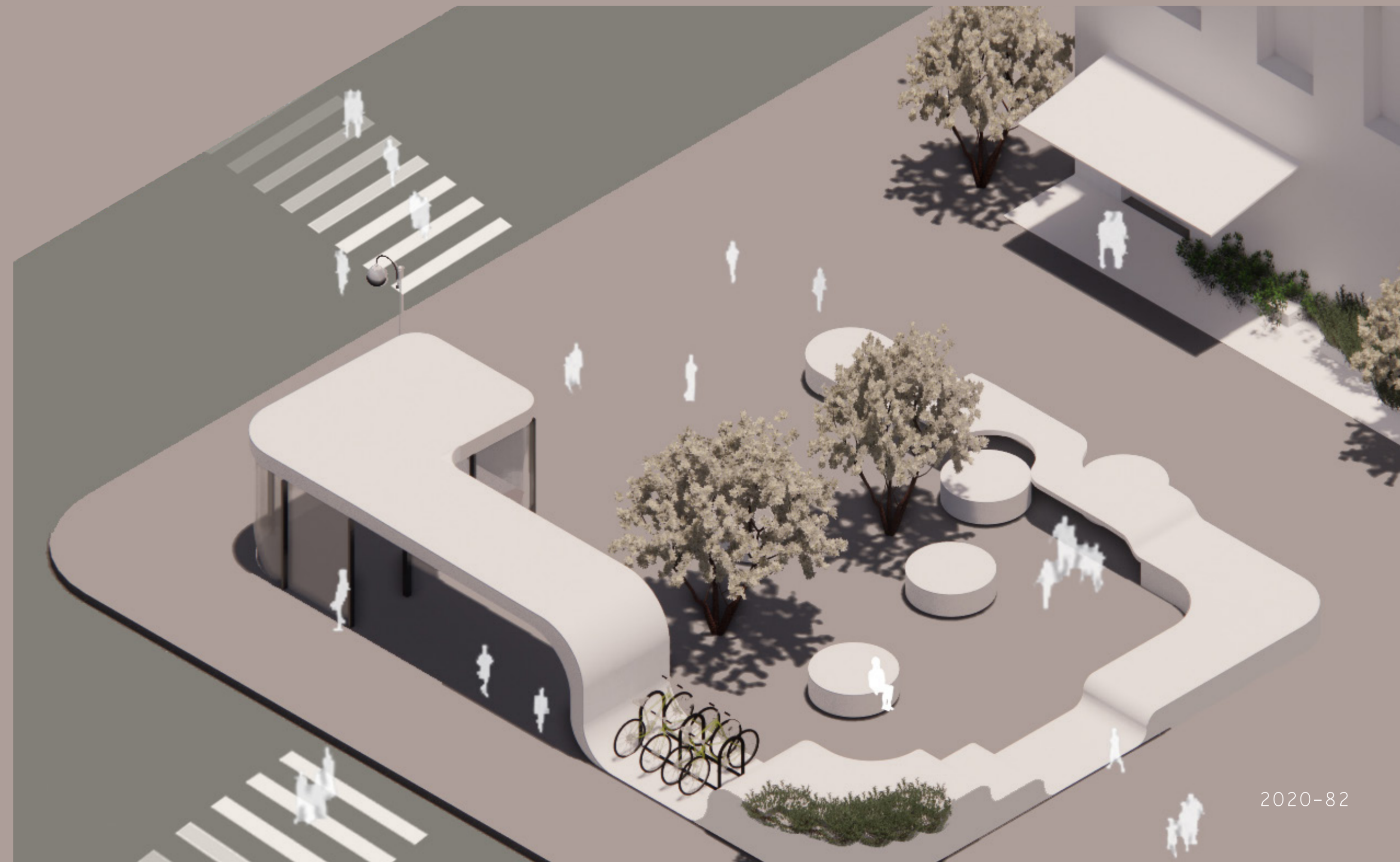
Digital touch screen with GPS & Jukebox integrated

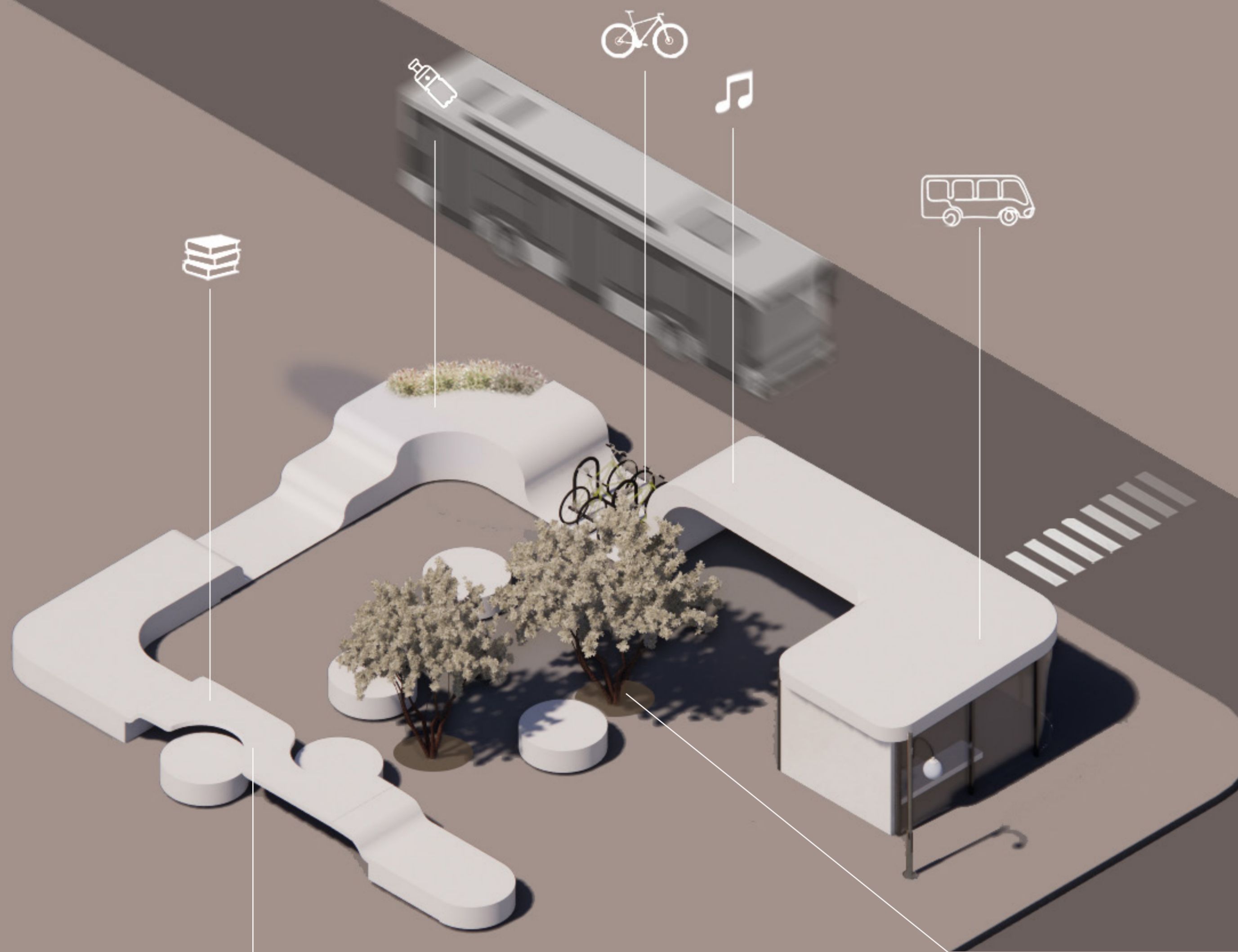


Mist cooling system



Integrated water fountain





In the same logic of putting forward public art in the urban transport infrastructure, the station sets up a jukebox allowing users and passers-by to play their favorite music during their waiting time. In this manner, the use of music brings people together in a warm atmosphere.

On the other hand, in order to offer a feeling of safety, RIBBON is illuminated by a play of light on the benches following the sound frequencies of the music playing, in addition to offering an interactive GPS device to its users.

The ribbon created from the roof of the bus shelter is also transformed into a bicycle station followed by a public water fountain where people can cool down during the warmer days. Furthermore, concerning the global climate crisis, our response to the heat waves is a misting cooling system integrated along the roofing of the ribbon.

Imitating the frequencies of the music played by the Jukebox, RIBBON's lights create a dynamic atmosphere as well as a developed sense of security.



