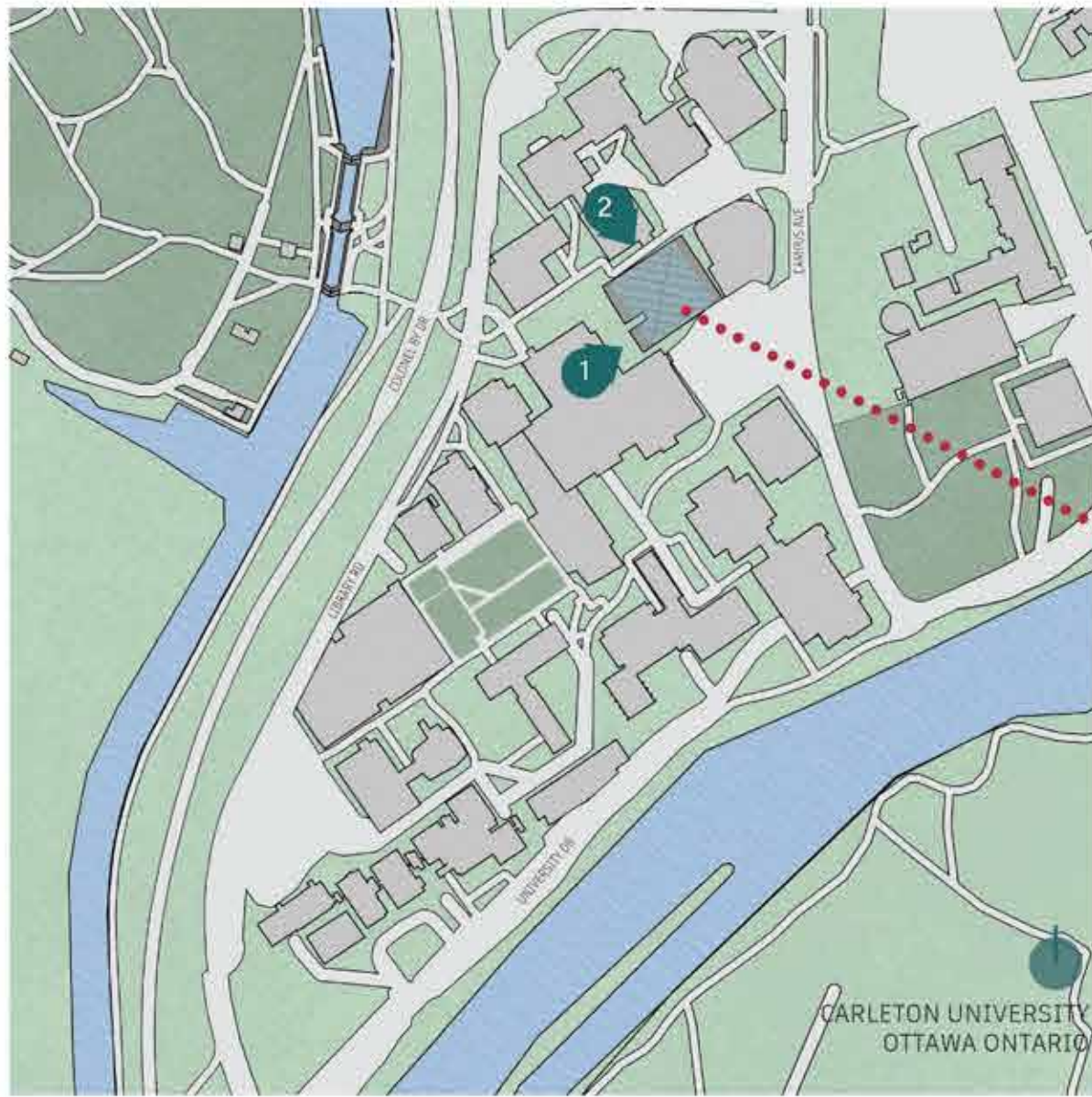


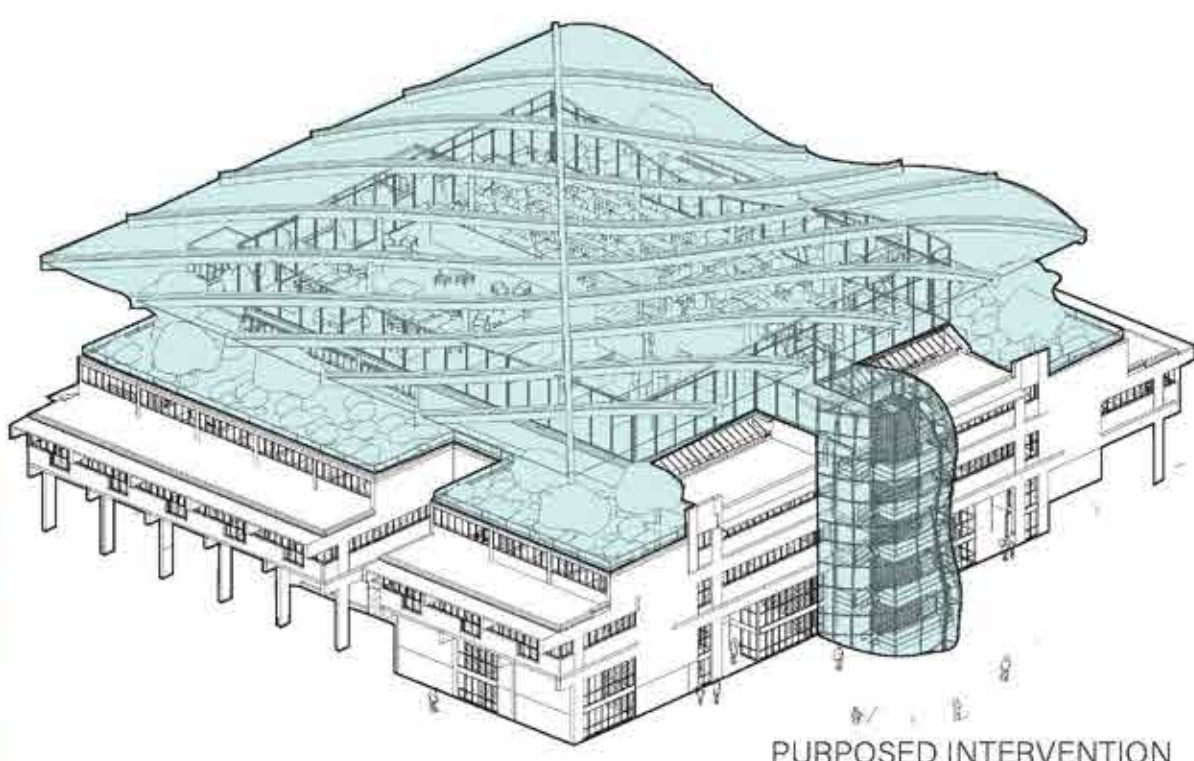


# STUDIO BEYOND

## AZRELI SCHOOL OF ARCHITECTURE ROOF ADDITION



..... AZRELI SCHOOL OF ARCHITECTURE - OTTAWA



PURPOSED INTERVENTION

### DESCRIPTION

Although an ostentatious structure, the new roof proudly seeks the attention of passersby as it notifies them, that they are in the presence of an architectural-ly advanced building. This contemporary asymmetrical design allows Carleton University's Azreli School of Architecture and Urbanism building to expand its studio spaces beyond the heights of its traditional walls and soar into the fields of modern design.

The program occupying underneath the new roof is meant to provide students with flexible open-concept spaces reserved for studios, galleries, lounges, and outdoor gardens. The floorplate remains untouched by the roof structure as it is anchored by the existing cores of its four perimeter egresses and central elevator extended from the fifth floor. The space welcomes the architectural adaptation of the students who inhabit it.

The diagonal steel beam structure not only creates the form of the roof but also supports the glass panes between them. By creating a transparent roof, it allows the students working inside to feel within the clouds and maximize their creative thought. Additional roof planes are occupied by gardens and outdoor green spaces, inviting interaction with students and nature. This easily accessible connection to the natural world promotes many benefits, both practically and mentally. The new urban gardens incorporated within the roofs of the architecture building help to break up the glass facades of neighboring high-rises within the campus skyline and provide a space for students to unwind, learn about agriculture, and promote mental health.

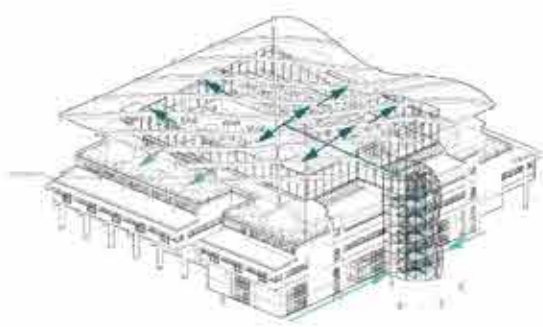
The new roof allows for the architecture building, now hidden behind the newly developed Nicol building on campus to reclaim its presence on site and demand attention to itself. The building is meant to reflect the potential of the students who work within it, and the addition of the roof deepens this connection.



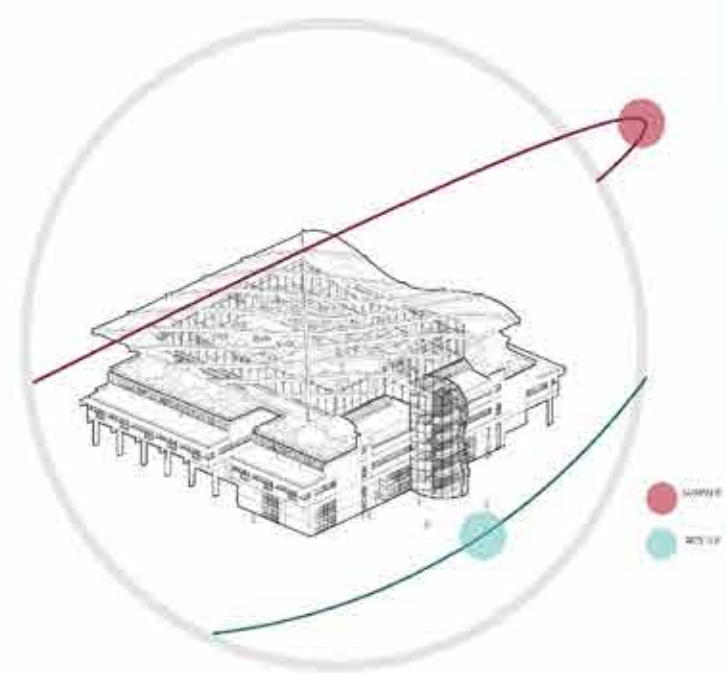
ELEVATION-A



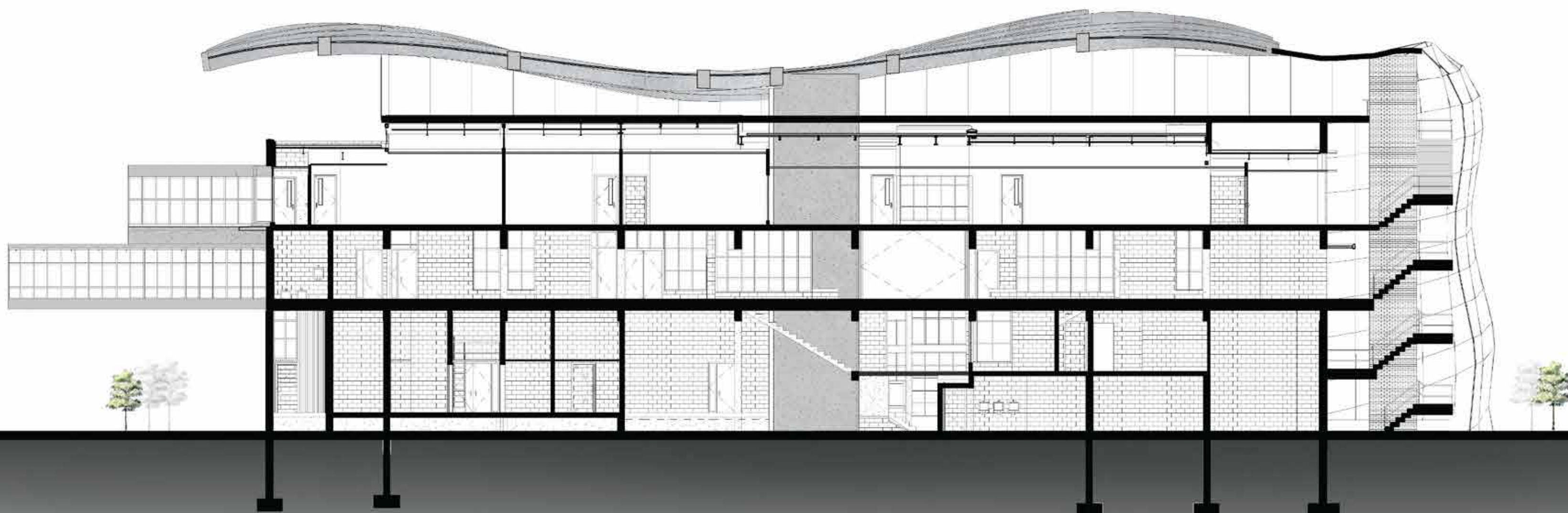
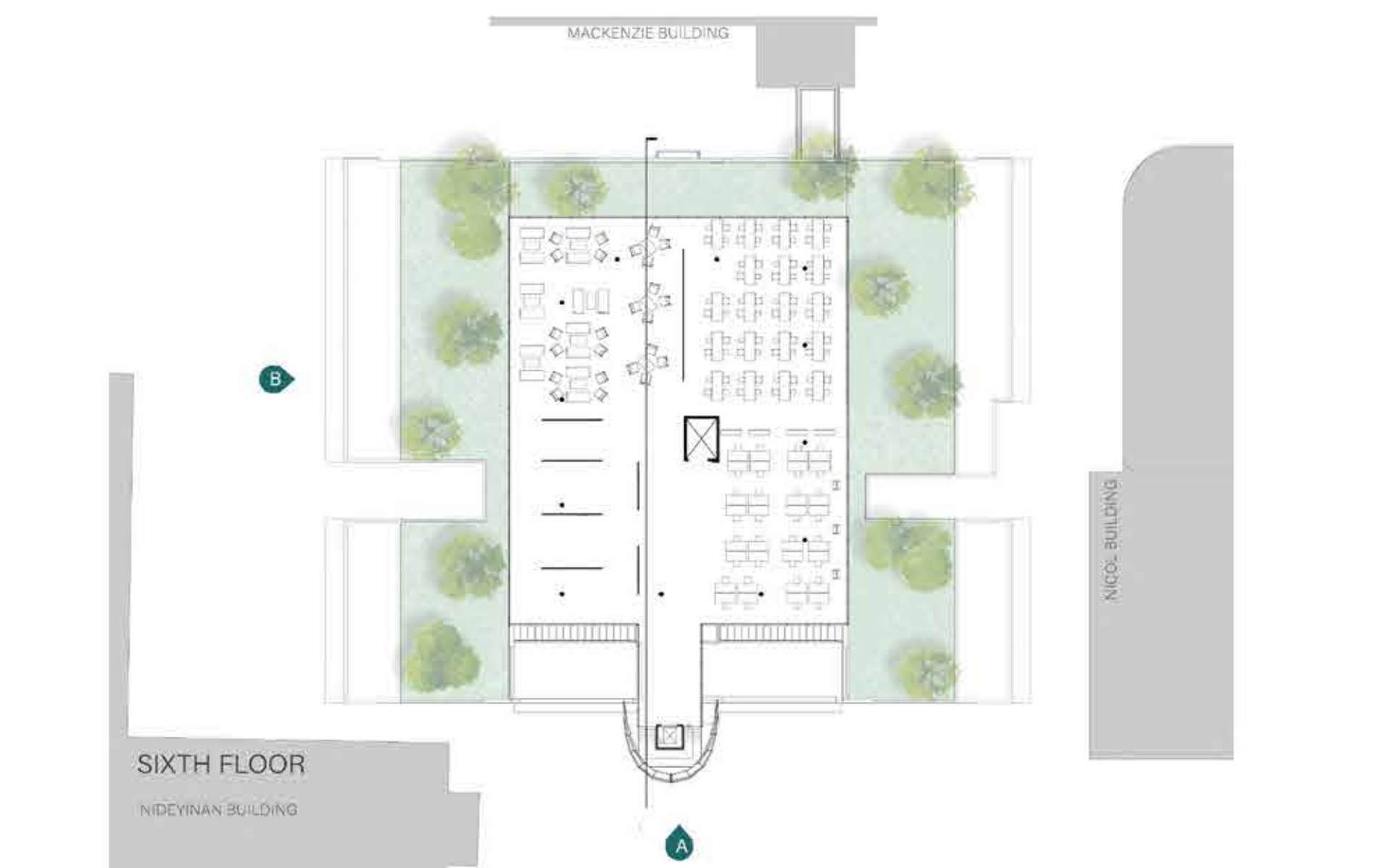
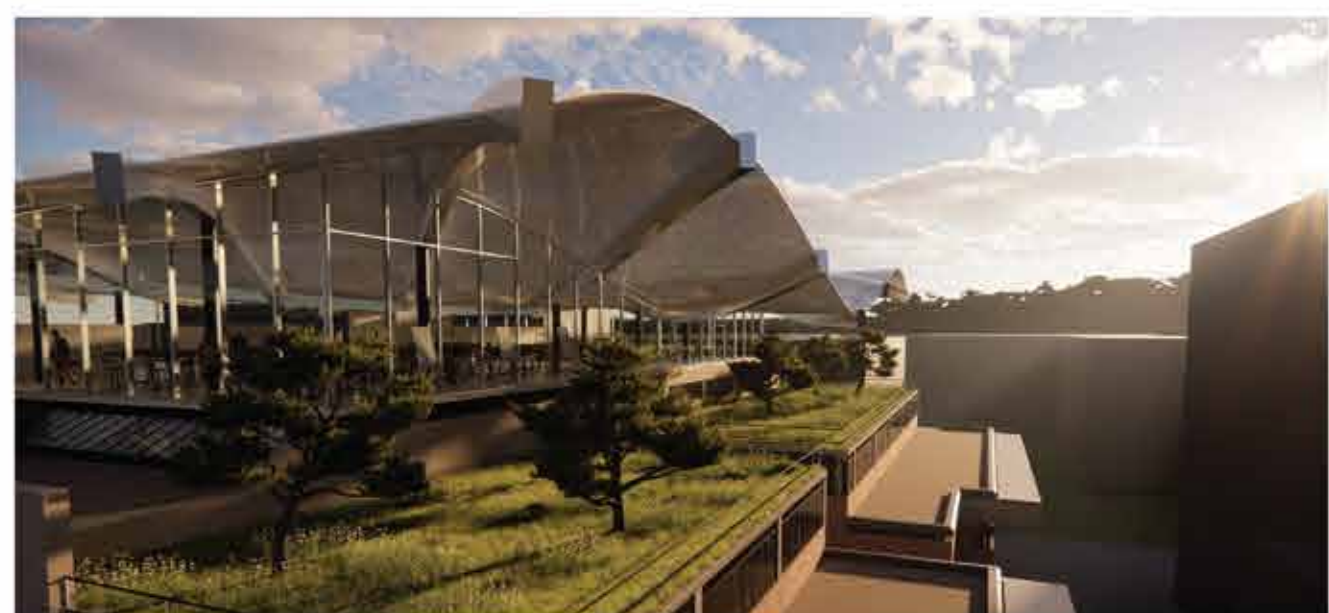
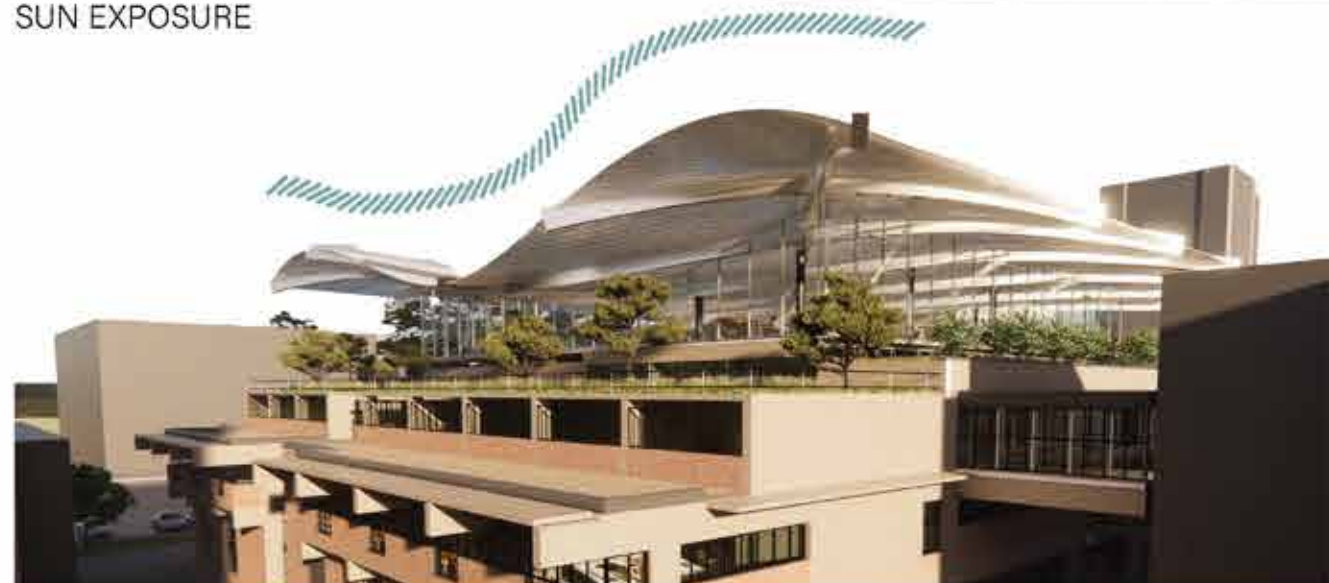
ELEVATION-B



CIRCULATION



SUN EXPOSURE



SECTION