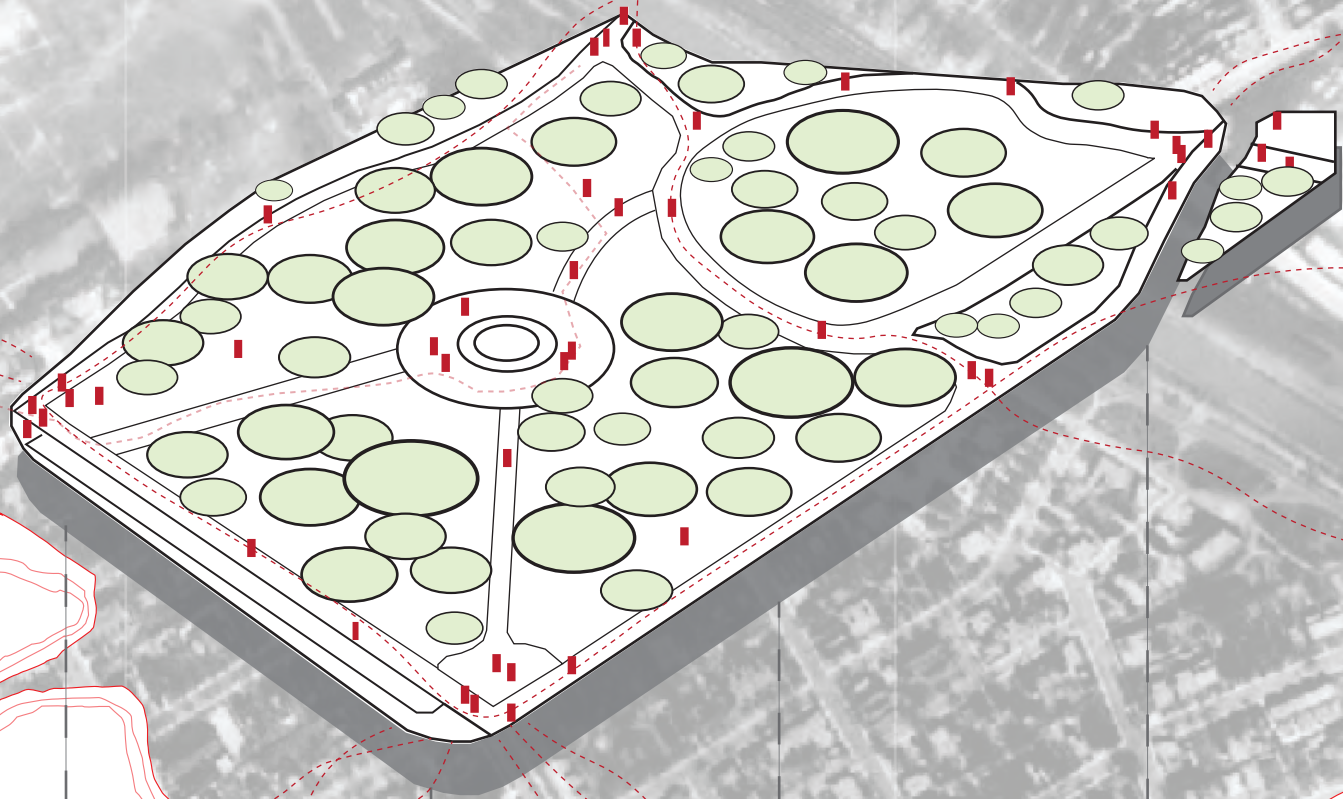


CONFEDERATION PARK, OTTAWA
45°25'20"N 75°41'30"W



ROXBOROUGH
APARTMENTS



1910-1966

KNOX
CHURCH



1874-1938

AYLMER
APARTMENTS



1914-1950

CANADIAN
BUILDING



1906-1965



This charette aimed to map the changes in utility and human movement in Confederation Park over the last century. The park in the early 20th century hosted a series of apartment buildings and other public spectacles that acted as destinations.

Now, the park serves more as a spacial medium in which people travel through to get elsewhere. Our project wanted to map these changes as well as add an element that will help it serve as a destination as opposed to a less defined urban scape. The site is situated downtown surrounded by parliament and the Rideau Canal,

and by adding a public stage and seating, the park transforms into a space in which people intentionally arrive to view a variety of entertainment such as live performances, plays et