

MOON LIGHTING

The island of Montréal once had flowing rivers, streams and creeks running throughout the landscape. Canalisation and urbanisation covered up this connection to the water. The term daylighting describes the process by which rivers are uncovered and brought back to the surface.

Downtowns and urban areas are often disconnected from nature with concrete, asphalt and steel covering surfaces and towering overhead. During the workday, the streets are packed with crowds of workers, commuters, shoppers – moving together along the frenetic choreography imposed by the demands of capitalism. At night, some create their own rhythm across bars and dancefloors, but many intersections are left hollowed-out, waiting for the morning's transactions.

This water threshold has long been cast aside and forgotten. *Could this case of lost history be used to reappropriate downtown for a new nighttime use?*

Metro, Boulot, Dodo, Ruisseau, Ralenti, Respire

RIVERS FLOWING THROUGHOUT THE ISLAND

Water Threshold

Buried Water

CANALISATION (sewers built)

URBANISATION

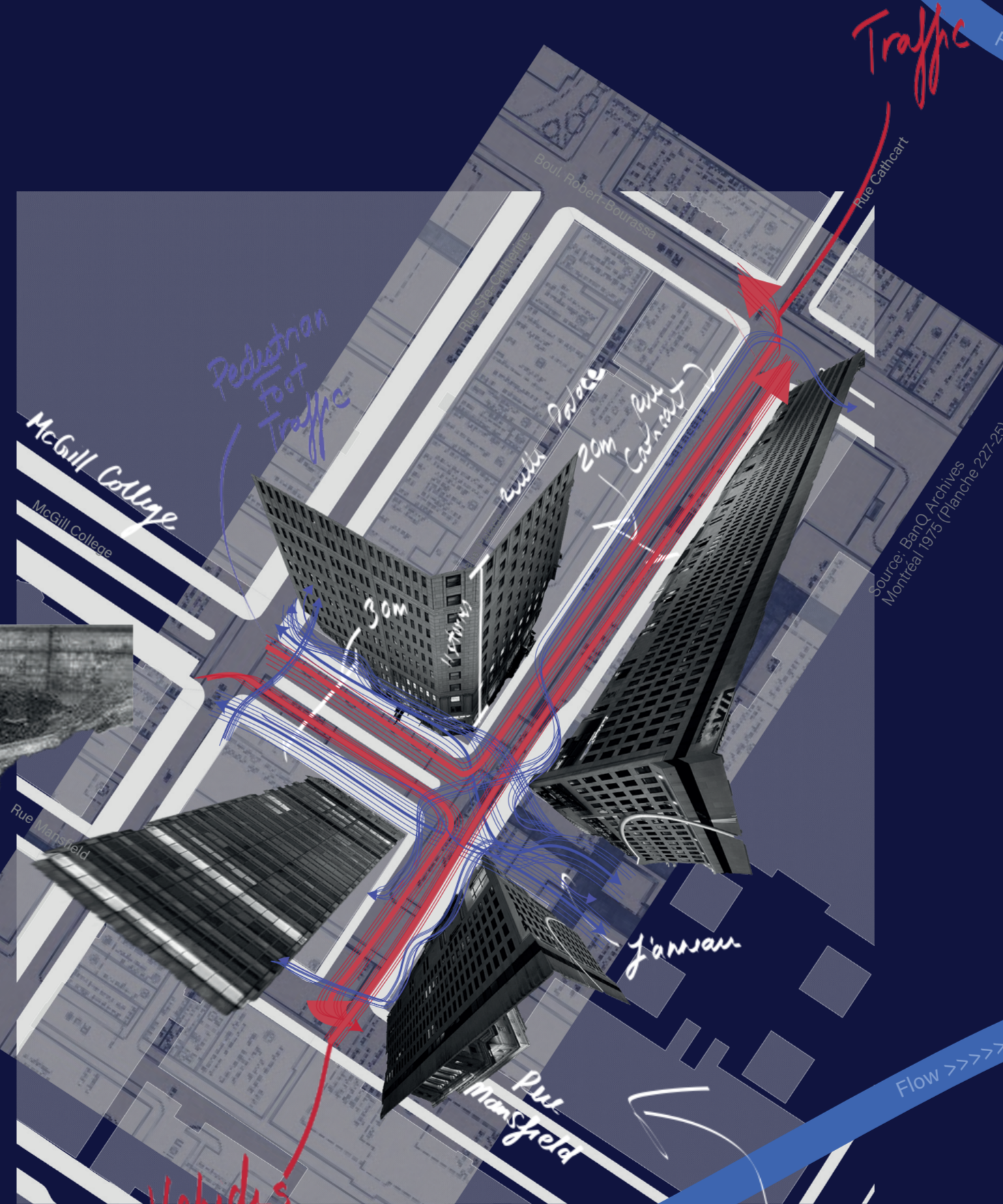
RENATURALISATION



Source: Spacing, Rivière St-Pierre

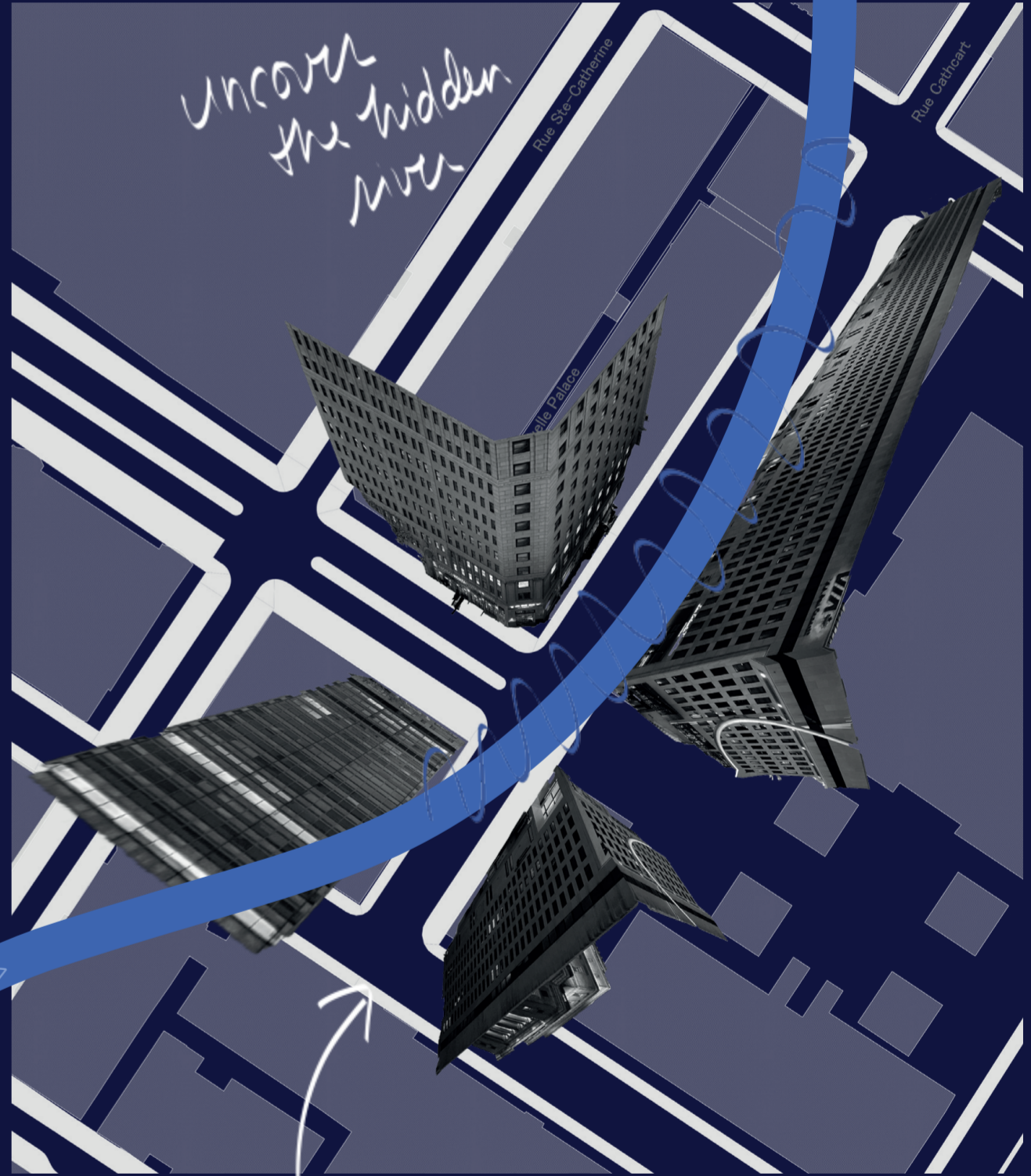


Source: CBC



Traffic

Vehicles, Vehicles, Vehicles



Uncover the hidden river

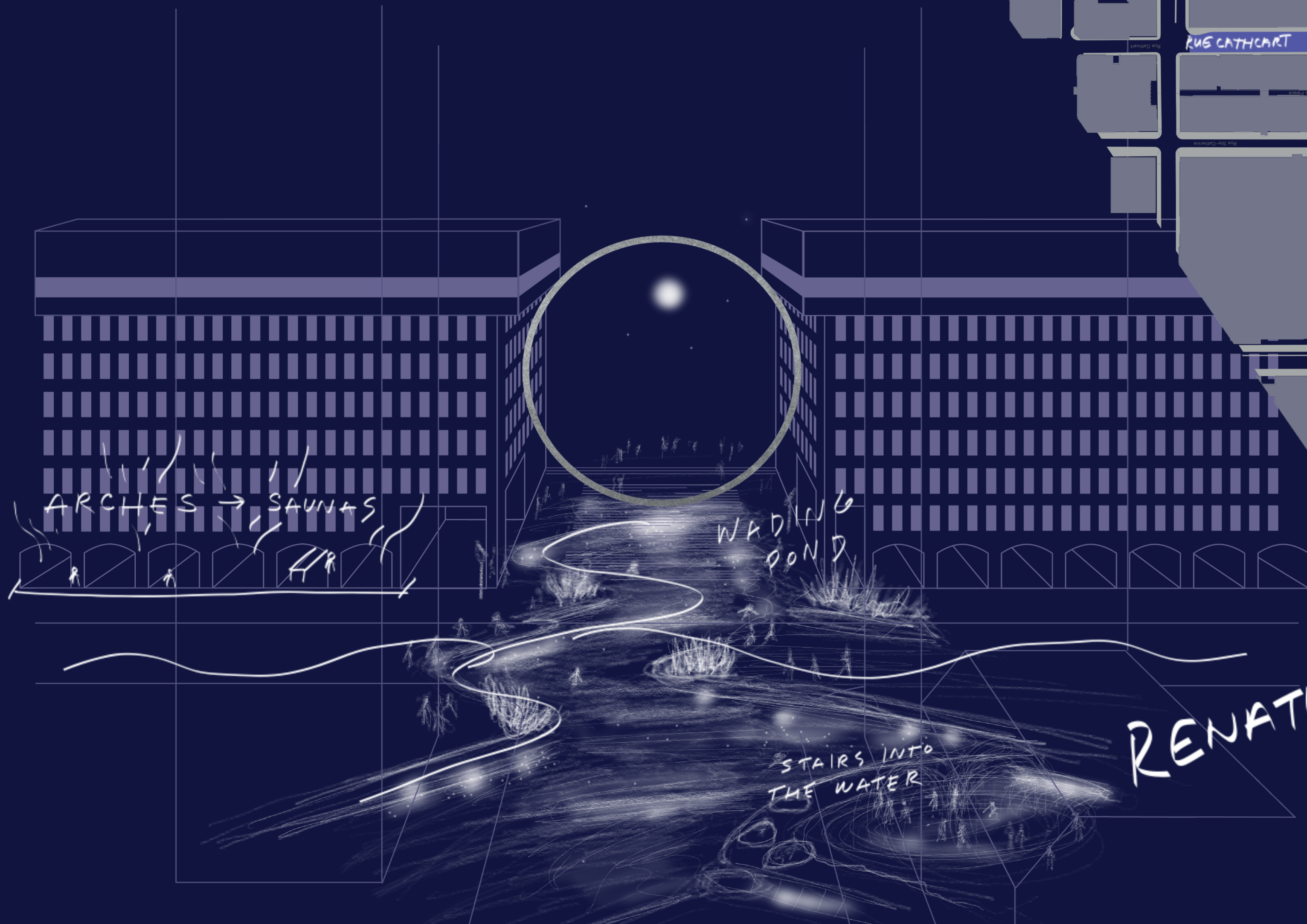
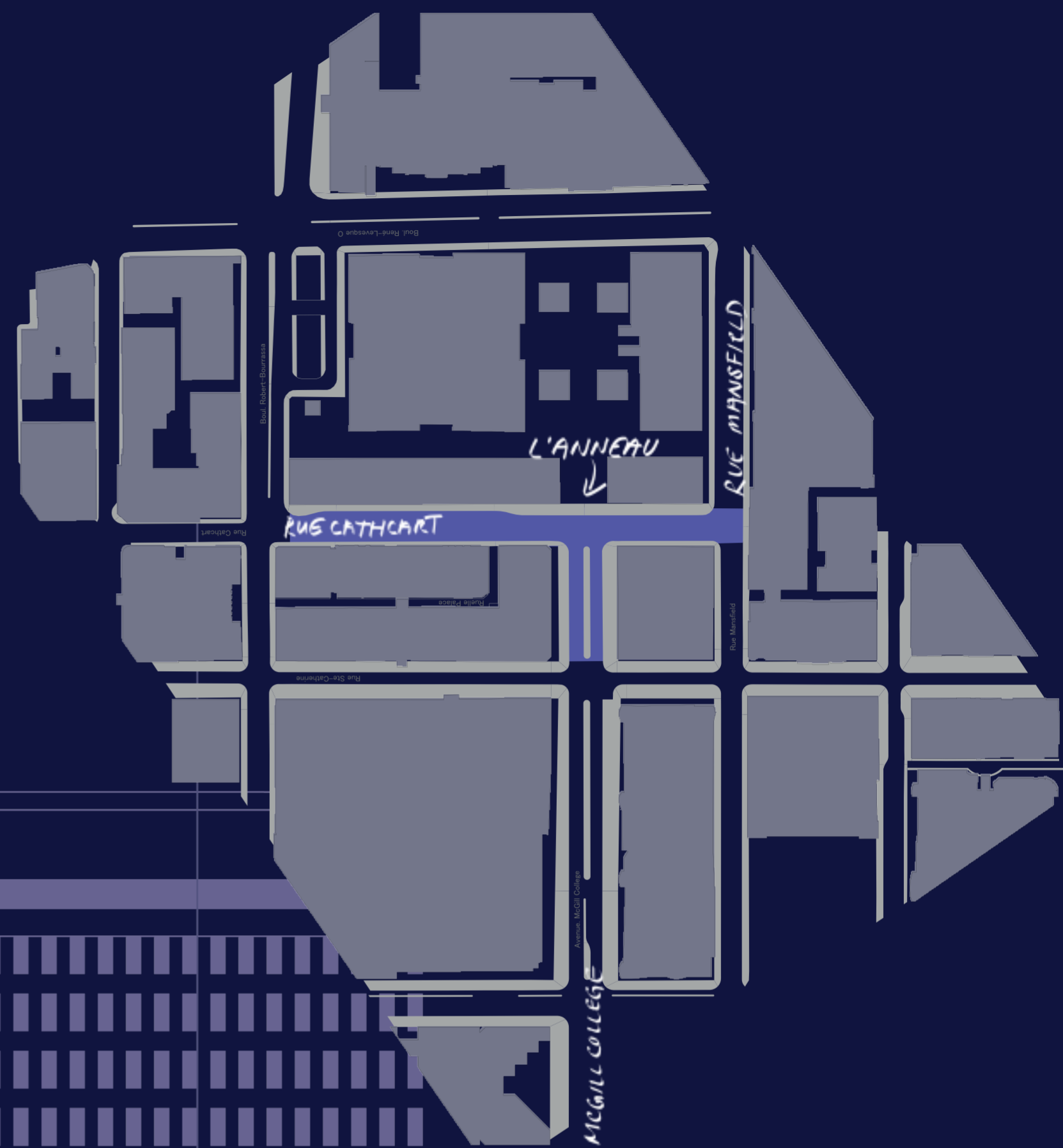
Square Phillips (120m)

Square Dorchester (200 m)

Imagine a historic river uncovered or moonlit in downtown Montréal, right at the center of the hustle and bustle.

Cathcart street outlines the path of the historic Ste-Catherine street ruisseau. Brought back to the surface, it becomes a place of respite from the oppressive concrete armature of the city center – the renaturalised river becomes a tool for greater community and environmental resilience, particularly against the rising incidence of climate change induced heatwaves and heavy rains. Simultaneously, the intersection emerges as a new public space for Montréalers to reconnect on multiples levels : with themselves, each other, and the island’s natural ecosystem.

The moonlit river offers an inclusive immersive night swimming experience. Several amenities spread out throughout the body of water saunas, wading pools, heated benches, steps to access the water.



RENATURALISATION